

STUDENT PERFORMANCE DATA

(Data are calculated using 2005-06 and 2006-07 achievement standards)

Math Knowledge and Skills Grade 10		Weight	2005-2006		2006-2007	
			Students	Weighted	Students	Weighted
<i>Caution: Performance/Achievement standards were re-established by the State Board for the 2006-2007 school year. As a result, scores required for each performance category generally differ between the two years shown. See pages 18-19 of the Report Card Manual posted at www.ode.state.or.us/search/page/?id=661</i>	Exceeds	133	68	9,044	100	13,300
	Meets	100	88	8,800	65	6,500
	Nearly Meets	67	59	3,953	24	1,608
	Low	33	17	561	41	1,353
	Very Low	0	4	0	3	0
	Totals		236	22,358	233	22,761
		Index**	94.7		97.7	

Reading Knowledge and Skills Grade 10		Weight	2005-2006		2006-2007	
			Students	Weighted	Students	Weighted
<i>Caution: Performance/Achievement standards were re-established by the State Board for the 2006-2007 school year. As a result, scores required for each performance category generally differ between the two years shown. See pages 18-19 of the Report Card Manual posted at www.ode.state.or.us/search/page/?id=661</i>	Exceeds	133	84	11,172	81	10,773
	Meets	100	99	9,900	107	10,700
	Nearly Meets	67	45	3,015	22	1,474
	Low	33	14	462	20	660
	Very Low	0	0	0	2	0
	Totals		242	24,549	232	23,607
		Index**	101.4		101.8	

Writing Grade 10		Weight	2005-2006		2006-2007	
			Students	Weighted	Students	Weighted
<i>For schools with grade 10, 2005-06 and 2006-07 Writing results are included in the calculation of the student performance rating but are not included in the Improvement rating.</i>	Exceeds	133	19	2,527	11	1,463
	Meets	100	170	17,000	150	15,000
	Nearly Meets	67	30	2,010	43	2,881
	Low	33	23	759	24	792
	Very Low	0	0	0	0	0
	Totals		242	22,296	228	20,136
		Index**	92.1		88.3	

** Index = Total Weighted / Total Students

STUDENT BEHAVIOR DATA

Attendance	School
2005-2006	92.0%
2006-2007	92.3%

Dropout	Number in School	School
2004-2005	12	1.1%
2005-2006	19	1.8%

STUDENT BEHAVIOR FORMULAE

Two-Year Average Attendance Index 2005-06, 2006-07 = $[(\text{Attendance Rate 2006} + \text{Attendance Rate 2007}) / 2]$
 = $[(92.0 + 92.3) / 2] = 92.2$

Two-Year Average Dropout Index 2004-05, 2005-06 = $[\{(100 - \text{Dropout Rate 2005}) + (100 - \text{Dropout Rate 2006})\} / 2]$
 = $[(98.9 + 98.2) / 2] = 98.6$

Student Behavior Rating: **Strong**

Student Behavior = $[(\text{Two-Year Average Attendance Index} + \text{Two-Year Average Dropout Index}) / 2]$
 $[(92.2 + 98.6) / 2] = 95.4$

Rating Score = 3

Rating Score	0	1	2	3	4
Rating	Unacceptable	Low	Satisfactory	Strong	Exceptional
Index Score	Less than 89.0	89.0 - 91.9	92.0 - 93.9	94.0 - 95.9	96.0 or Higher

* Please note that all numbers are rounded to the nearest tenth after every multiplication or division.

IMPROVEMENT DATA

(Data are calculated only using the 2005-06 achievement standards)

Math Knowledge and Skills Grade 10

To provide for comparability over time, student performance for all years is reported based on the Achievement/Performance standards in place for the 2005-2006 and prior school years.

	Weight	2003-2004		2004-2005		2005-2006		2006-2007	
		Students	Weighted	Students	Weighted	Students	Weighted	Students	Weighted
Exceeds	133	86	11,438	84	11,172	68	9,044	72	9,576
Meets	100	69	6,900	73	7,300	88	8,800	77	7,700
Nearly Meets	67	58	3,886	55	3,685	59	3,953	50	3,350
Low	33	31	1,023	24	792	17	561	27	891
Very Low	0	2	0	3	0	4	0	7	0
Totals		246	23,247	239	22,949	236	22,358	233	21,517
Index**		94.5		96.0		94.7		92.3	

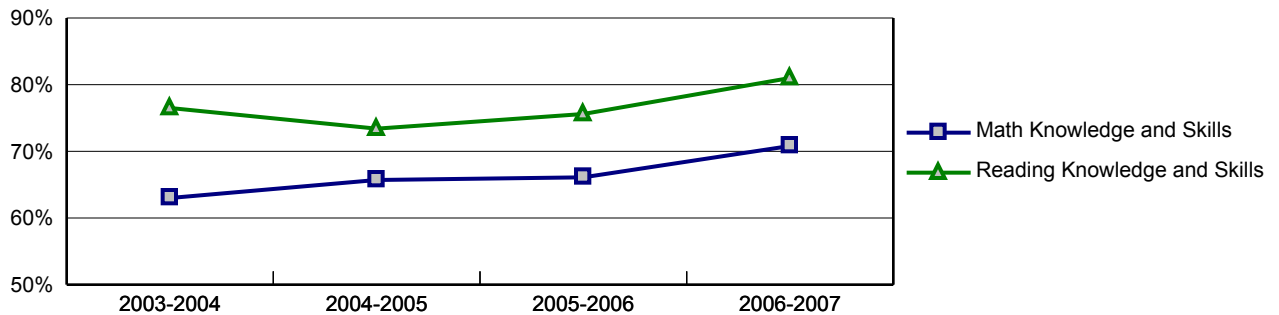
Reading Knowledge and Skills Grade 10

To provide for comparability over time, student performance for all years is reported based on the Achievement/Performance standards in place for the 2005-2006 and prior school years.

	Weight	2003-2004		2004-2005		2005-2006		2006-2007	
		Students	Weighted	Students	Weighted	Students	Weighted	Students	Weighted
Exceeds	133	69	9,177	84	11,172	84	11,172	76	10,108
Meets	100	123	12,300	95	9,500	99	9,900	91	9,100
Nearly Meets	67	43	2,881	41	2,747	45	3,015	44	2,948
Low	33	16	528	23	759	14	462	19	627
Very Low	0	0	0	1	0	0	0	2	0
Totals		251	24,886	244	24,178	242	24,549	232	22,783
Index**		99.1		99.1		101.4		98.2	

** Index = Total Weighted / Total Students

Student Performance Trends



* Please note that all numbers are rounded to the nearest tenth after every multiplication or division.

SCHOOL CHARACTERISTICS DATA

Participation Detail

Grade	RL		MA		WR	
	Partic	Non-Partic	Partic	Non-Partic	Partic	Non-Partic
3	0	0	0	0		
4	0	0	0	0	0	0
5	0	0	0	0		
6	0	0	0	0		
7	0	0	0	0	0	0
8	0	0	0	0		
10	244	3	242	3	237	6

SCHOOL CHARACTERISTICS FORMULAE

Participation in Statewide Assessments = Number of Participants + Number of Non-Participants
 = 723 + 12 = 735

School Characteristics Rating: **Exceptional**

School Characteristics = Participants / (Participants + Non-Participants)
 723 / 735 = 98.4

Unacceptable	Low	Exceptional
Less than 89.5	89.5 - 94.4	94.5 or Higher

* Please note that all numbers are rounded to the nearest tenth after every multiplication or division.