

Species Classification

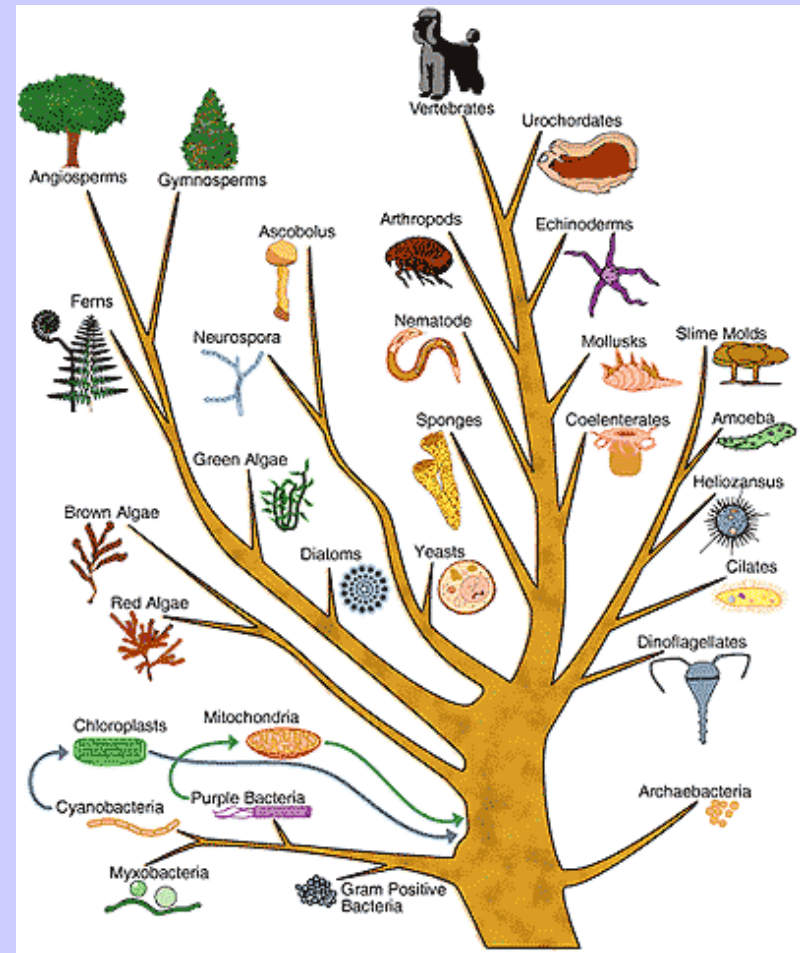
What is a species?

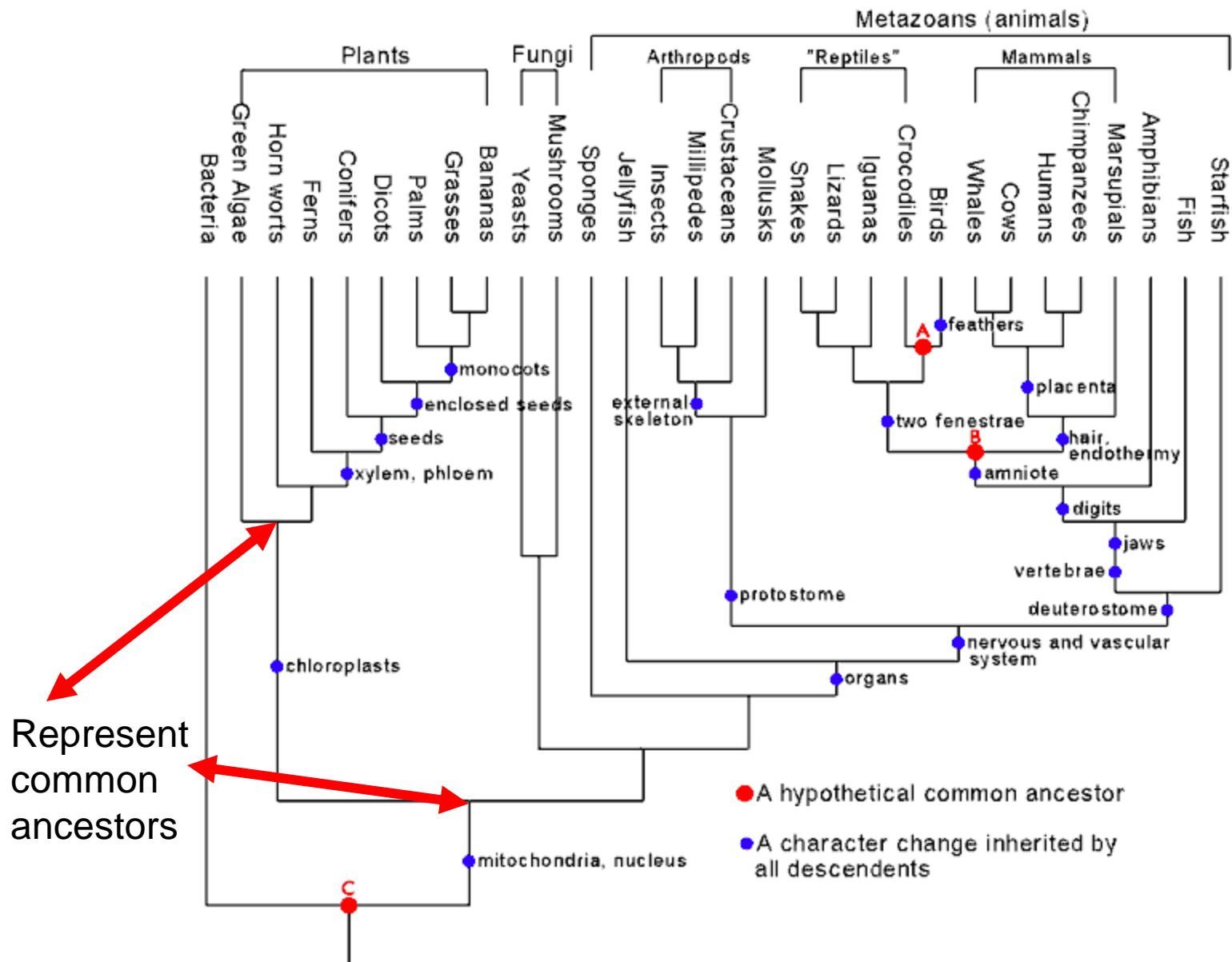
- A species is;

A group of organisms capable of interbreeding and producing fertile offspring.

How to we classify species?

- By using phylogenetic trees
- Used to be classified in a “ladder-like” way
- All organisms share the same “roots”
- The “branches” represent diversions through development of characteristics
- Some species share common ancestors, which is the most recent organism some species have in common.





Cladograms

- **What is a clade?**
 - A group that contains a common ancestor and all the descendants of that ancestor
- **Clades focus on evolutionary relationships**
- **Uses RNA and DNA evidence to show deeper relationships**

