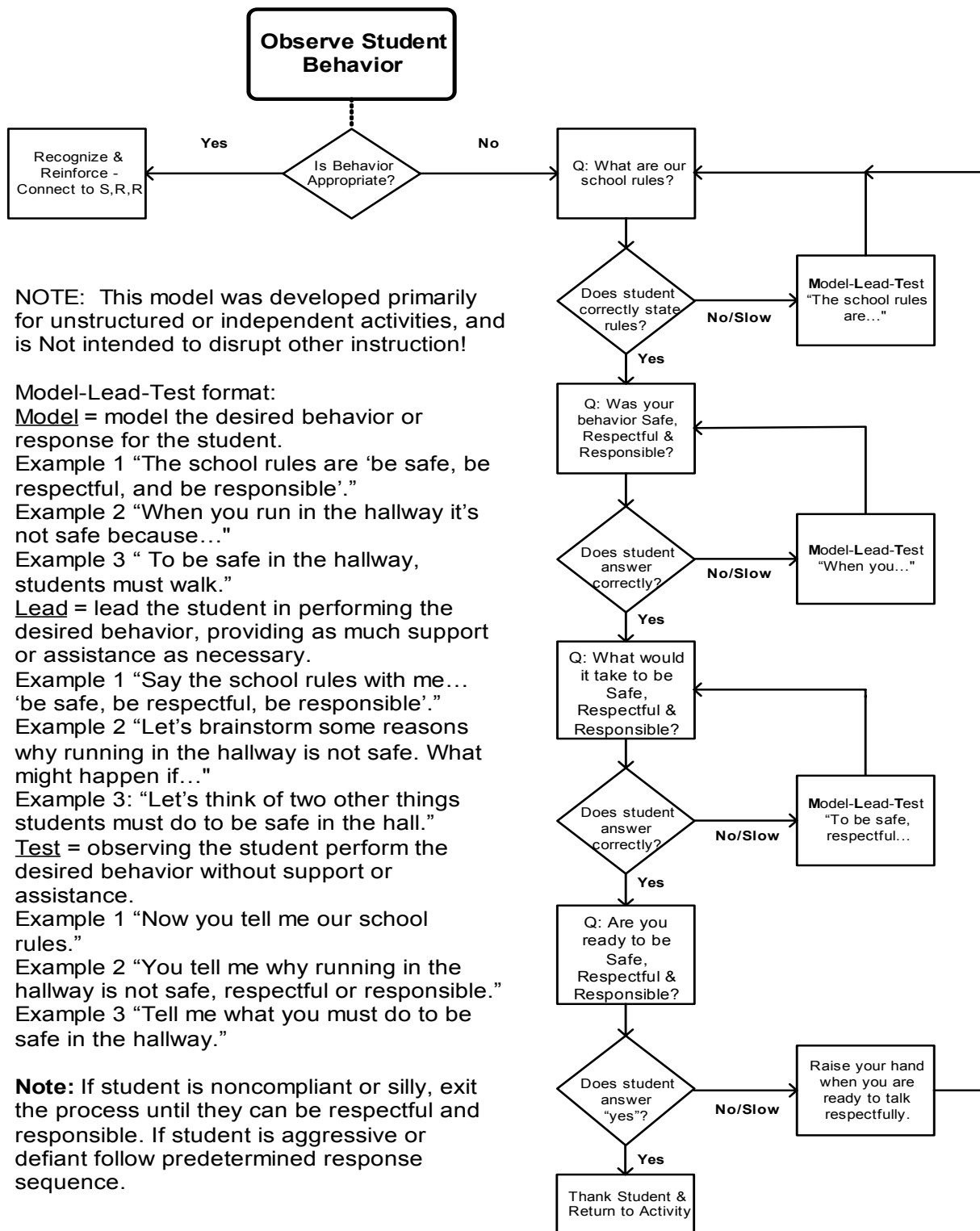


# RESPONDING TO BEHAVIOR FLOWCHART



NOTE: This model was developed primarily for unstructured or independent activities, and is Not intended to disrupt other instruction!

Model-Lead-Test format:

**Model** = model the desired behavior or response for the student.

Example 1 "The school rules are 'be safe, be respectful, and be responsible'."

Example 2 "When you run in the hallway it's not safe because..."

Example 3 "To be safe in the hallway, students must walk."

**Lead** = lead the student in performing the desired behavior, providing as much support or assistance as necessary.

Example 1 "Say the school rules with me... 'be safe, be respectful, be responsible'."

Example 2 "Let's brainstorm some reasons why running in the hallway is not safe. What might happen if..."

Example 3: "Let's think of two other things students must do to be safe in the hall."

**Test** = observing the student perform the desired behavior without support or assistance.

Example 1 "Now you tell me our school rules."

Example 2 "You tell me why running in the hallway is not safe, respectful or responsible."

Example 3 "Tell me what you must do to be safe in the hallway."

**Note:** If student is noncompliant or silly, exit the process until they can be respectful and responsible. If student is aggressive or defiant follow predetermined response sequence.

*Dale R. Myers & Associates Consulting*

1430 Willamette Street, Eugene, OR 97401-4049 541-760-6208



SPSYatWork@aol.com

http://hometown.aol.com/spsyatwork/



© DRM 2003-09