



Corvallis
SCHOOL DISTRICT

BOND UPDATES

October 18, 2021



Safety & Security
Improvements



Capacity
Improvements



Renovations
& Repairs



Modern
Educational Spaces

Bond Project Schools Are Open

- Lincoln – School open, sitework completes end of year
- Garfield – Project complete
- Letitia Carson and Kathryn Jones Harrison – Initial work has begun and will continue
- CHS – The majority of work is complete
- CVHS – The majority of work is complete

Labor and material shortages and delivery delays have been a challenge for all teams.

Budget Highlights

- We have increased our forecast costs to reflect current market conditions
- Labor and material shortages have led to uncertainty
- Five projects are this fall and winter, budgeted at approximately \$55 million in construction costs
- These pending results, and committed GMP's from our contractors, will decrease budgetary risks

GMP Timing and Targets

| | | |
|--------------------------------|----------------------------------|--------------------------------|
| <i>Cheldelin HVAC/Seismic:</i> | <i>Target GMP to board 11/18</i> | <i>Budgeted value: \$3.6M</i> |
| <i>Adams Elementary:</i> | <i>Target GMP to board 11/18</i> | <i>Budgeted value: \$13.9M</i> |
| <i>Mt. View Elementary:</i> | <i>Target GMP to board 12/16</i> | <i>Budgeted value: \$14.6M</i> |
| <i>Franklin K-8:</i> | <i>Target GMP to board 12/16</i> | <i>Budgeted value: \$9.1M</i> |
| <i>Harding/College Hill:</i> | <i>Target GMP to board 1/6</i> | <i>Budgeted value: \$13.5M</i> |

If these budgeted values are achieved, CSD will have \$4.7M in unallocated bond funds remaining.

Solar Energy Update

| Site | Solar Production | Battery Capacity | Corvallis Sustainability Coalition Partnership | Installed |
|---|------------------|------------------|--|-----------|
| Resiliency Site | | | | |
| Lincoln | 164kW | 260kWh | No | Yes |
| Mountain View | 70kW** | 30kWh* | Yes | No |
| Solar Maximization | | | | |
| CHS | 150kW*** | n/a | Yes | Yes |
| Adams/DO | 150kW | n/a | Yes | Yes |
| Educational Array | | | | |
| Franklin | 65kW* | n/a | Yes | No |
| Garfield | 1.8kW* | n/a | No | Yes |
| Bessie Coleman | 24kW | n/a | No | No |
| Kathryn Jones Harrison | 9kW* | n/a | No | No |
| Letitia Carson | 25kW | n/a | No | No |
| Cheldelin | 5kW* | n/a | No | No |
| Linus Pauling | 50kW* | n/a | Yes | No |
| CVHS | 25kW* | n/a | Yes | No |
| College Hill | 9kW* | n/a | No | No |
| * Planned | | | | |
| ** Exploring increasing array size with engineers and Coalition | | | | |
| ***150kW new + 117kW existing = 267kW | | | | |

Meeting the State renewable energy mandate for 1.5% of construction costs and CSD's Design Guidance Principles.

Energy Dashboard

Corvallis SCHOOL DISTRICT

View List

Lincoln ELEMENTARY SCHOOL

Adams ELEMENTARY SCHOOL

Garfield ELEMENTARY SCHOOL

Hoover ELEMENTARY SCHOOL

Jefferson ELEMENTARY SCHOOL

Mountain View ELEMENTARY SCHOOL

Wildcat ELEMENTARY SCHOOL

Franklin K-8 SCHOOL

Linus Pauling MIDDLE SCHOOL

Cheldelin MIDDLE SCHOOL

Lincoln ELEMENTARY SCHOOL

View List

Summary Electricity Solar Domestic Water Recycling Gas Battery Irrigation

Hourly Daily Monthly Yearly Jul 10, 2021/Jul 10, 2021 Compare

| Hour | Electricity Usage |
|------|-------------------|
| 0 | 0 |
| 2 | 2 |
| 4 | 4 |
| 6 | 6 |
| 8 | 8 |
| 10 | 10 |
| 12 | 12 |

Lincoln ELEMENTARY SCHOOL

View List

Summary Electricity Solar Domestic Water Recycling Gas Battery Irrigation

Did you know? Refresh

An important way to reduce climate change is to reduce the amount of food we waste.

<https://drawdown.org/solutions/health-and-education>

Launching soon for Lincoln!

Sustainability Signage

Bienvenidos

El Distrito Escolar de Corvallis cree que todos tenemos la responsabilidad de ser administradores del medio ambiente. Al conservar los recursos naturales, minimizaremos nuestro impacto y contribuiremos a un futuro más sustentable. Esta escuela fue construida para la sustentabilidad y diseñada para reducir la huella de carbono del edificio al tiempo que proporciona ahorros en los costos de la operación. La luz natural, las temperaturas agradables y los espacios acogedores hacen que cada parte de esta instalación sea útil para aprender, pensar y crecer!

Sustentabilidad en nuestras escuelas

Este edificio minimiza el uso de energía y agua al mismo tiempo que brinda espacios de aprendizaje seguros, acogedores y atractivos. Fue diseñado para tener un impacto positivo en nuestros estudiantes, nuestra comunidad y nuestro planeta y está alineado con el plan de gestión de sustentabilidad del Distrito Escolar de Corvallis. En todo el edificio, encontrará aspectos destacados de sustentabilidad relacionados con cada una de nuestras cuatro áreas de acción:

-  ENERGÍA Y AGUA
-  COMIDA Y DESPERDICIOS
-  INSTALACIONES
-  TRANSPORTACIÓN



Construido para la sustentabilidad
Este edificio de dos pisos y 69,560 pies cuadrados cuenta con amplios elementos de diseño sustentable y está diseñado según los requisitos del programa **Path to Net Zero** de Energy Trust of Oregon, que incluye elementos como:

- Un proceso de diseño reflexivo informado por nuestra comunidad
- Implementación de la iluminación natural para mejorar el aprendizaje y la eficiencia energética.
- Generación solar y respaldo de batería para la resiliencia de la comunidad
- Estacionamiento de bicicletas ampliado y pasarelas aptas para peatones
- Accesorios eficientes en agua y medición

Construido para la sustentabilidad
Energía solar
El panel solar de 149,5 kW en el techo proporciona energía limpia y renovable al edificio. La matriz se conecta a un sistema de batería que respalda la capacidad de recuperación del edificio y permite que los sistemas críticos funcionen durante un corte de energía.

Built for Sustainability
Solar Power
The 149.5 kW solar array on the roof provides clean, renewable energy to the building. The array connects to a battery system that supports building resiliency, allowing critical systems to operate during a power outage.

Busque estas características de sustentabilidad



Construido para la sustentabilidad

Reducción en el uso de agua

Los accesorios de plomería de alta eficiencia que usan menos agua están instalados en todo el edificio. Las estaciones de llenado de botellas de agua como esta fomentan el uso de botellas de agua reutilizables, lo que reduce los impactos ambientales causados por las botellas de agua de plástico de un solo uso.

Built for Sustainability

Water Use Reduction

High efficiency plumbing fixtures that use less water are installed throughout the building. Water bottle filling stations like this one encourage the use of reusable water bottles, reducing the environmental impacts caused by single-use plastic water bottles.



Garfield Elementary



The school is complete and operational. Fortis is cleaning up the construction yard and doing the final landscaping.

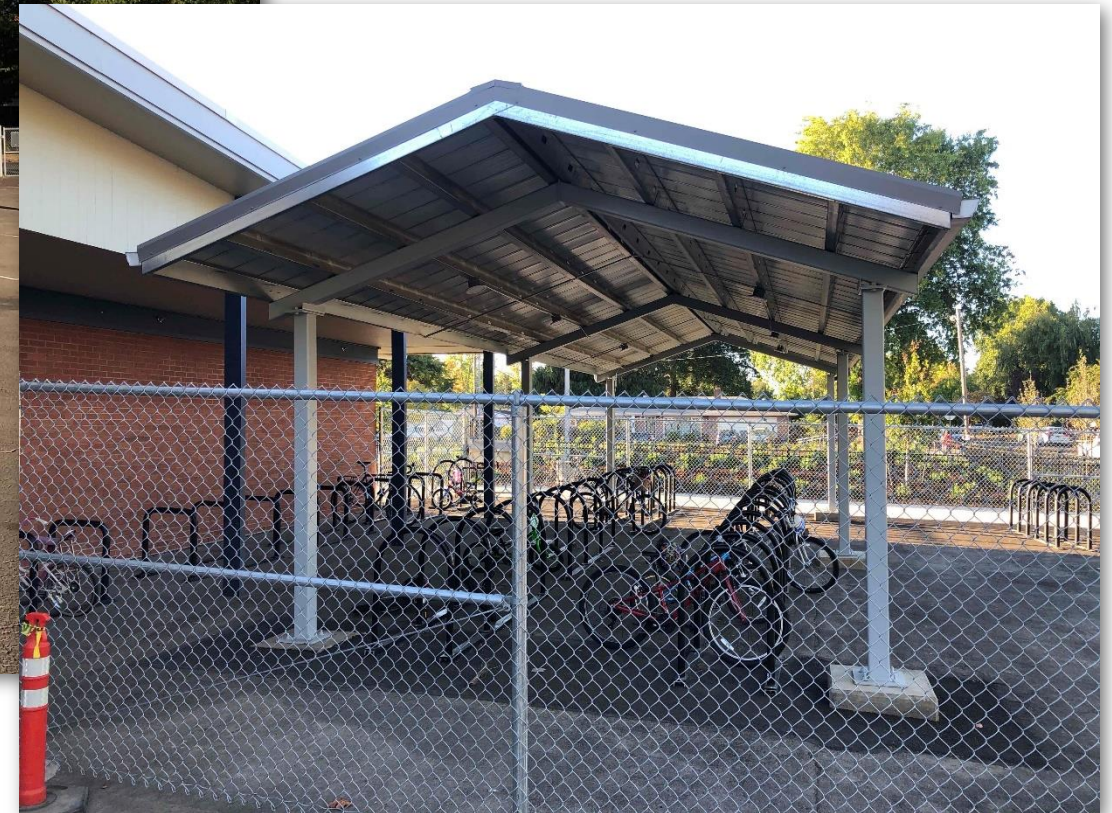
Garfield Solar Canopy & Front Entry



Garfield Front Office



Garfield Covered Play & Bike Parking





Garfield New Commons Area



Garfield Renovated Kitchen



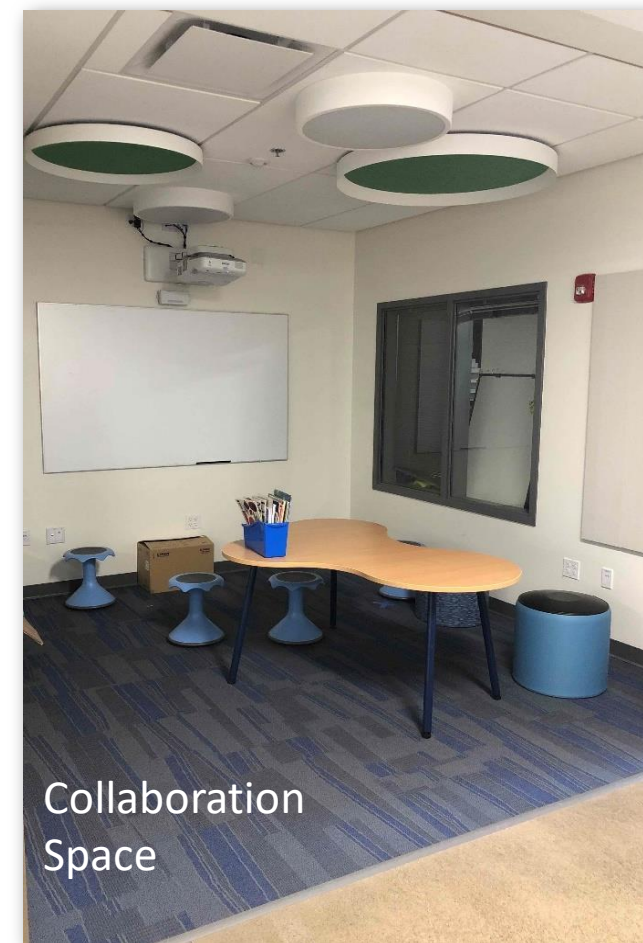
Garfield Outdoor Learning Areas



Garfield New Learning Spaces



Art & Science Room



Collaboration
Space

Garfield Gym & Music



New Music Room on Stage &
Refurbished Gym



Garfield Media Center



Lincoln Elementary



The school is complete and operational. Work continues on the playground, fields and landscaping.

Many thanks to staff and mover teams!



Lincoln Elementary Gym

Lincoln Elementary Commons



Lincoln Elementary Playground Equipment



Lincoln Elementary Covered Play Structure

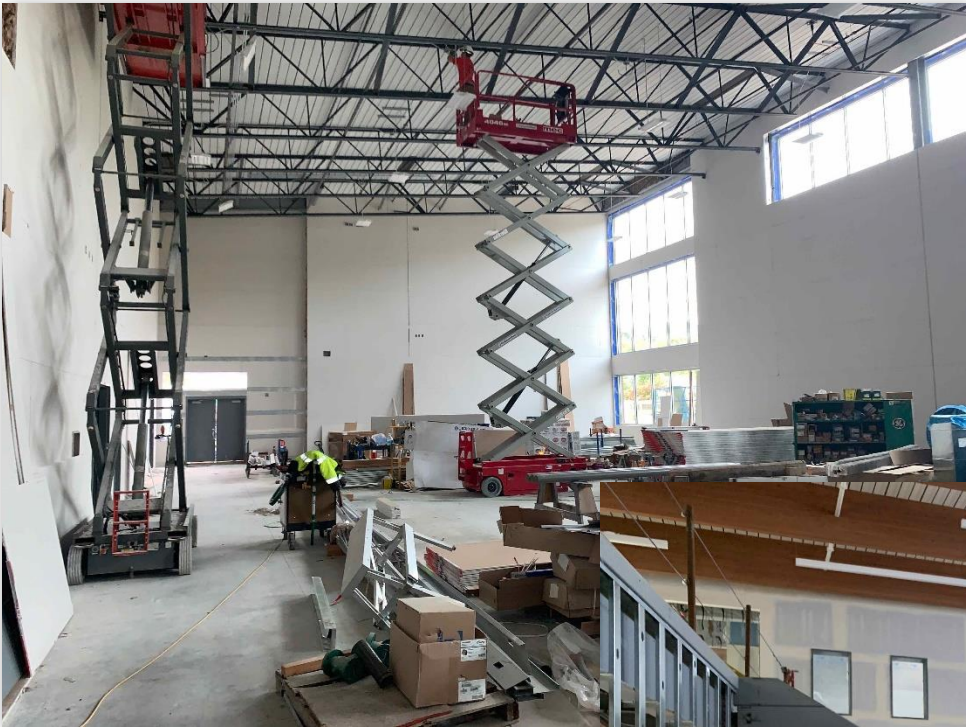


Bessie Coleman Elementary



This project is on target for move-in over Winter Break.

Bessie Coleman Elementary Construction Continues



Gymnasium



Classrooms



Commons

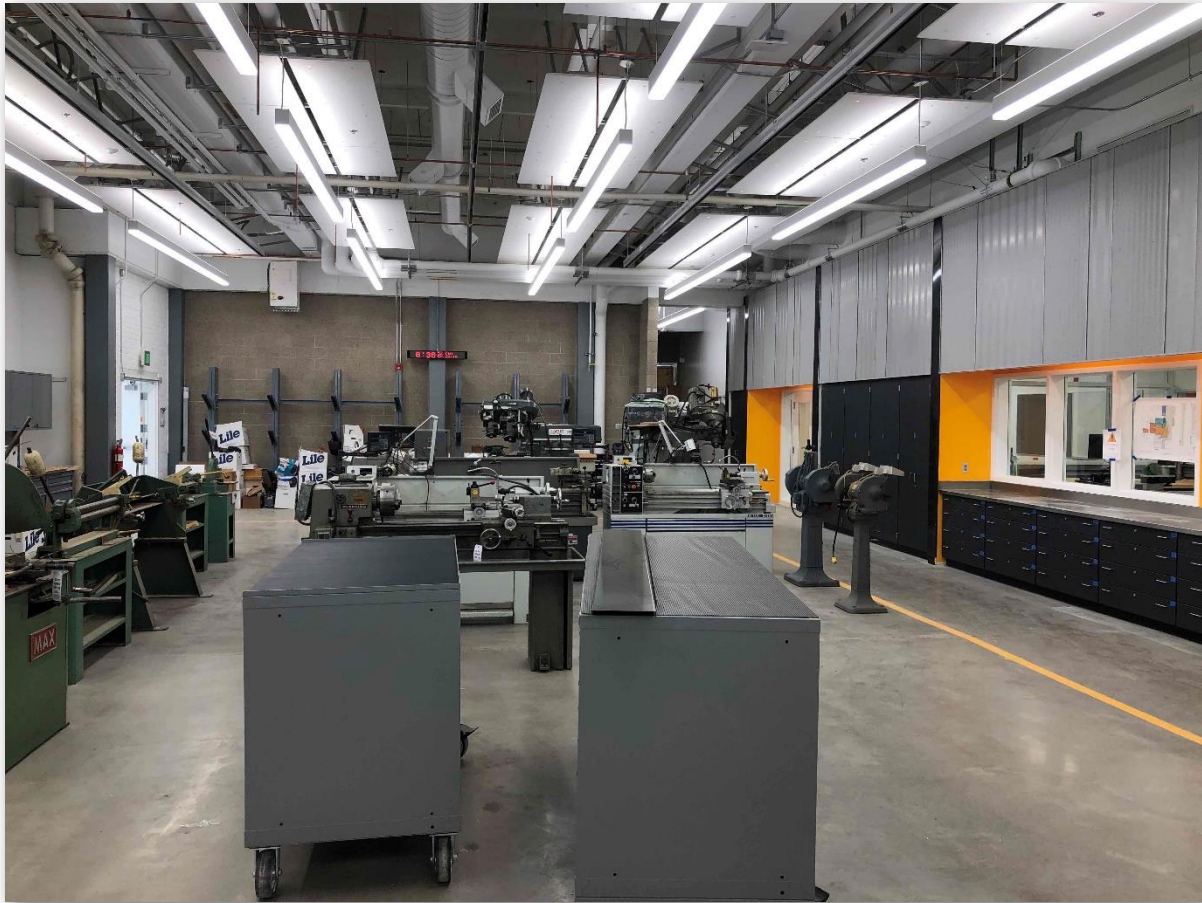


Casework

Crescent Valley High School

- All buildings are open for school
- A minor portion of the gym seismic work will be completed at a later time to not impact students
- There are some items, such as the overhead glass doors at the auto shop classroom, delayed by supply chain challenges
- The bond team is working with CTE teaching staff to fine-tune the new installations to suit program adjustments and class operational needs

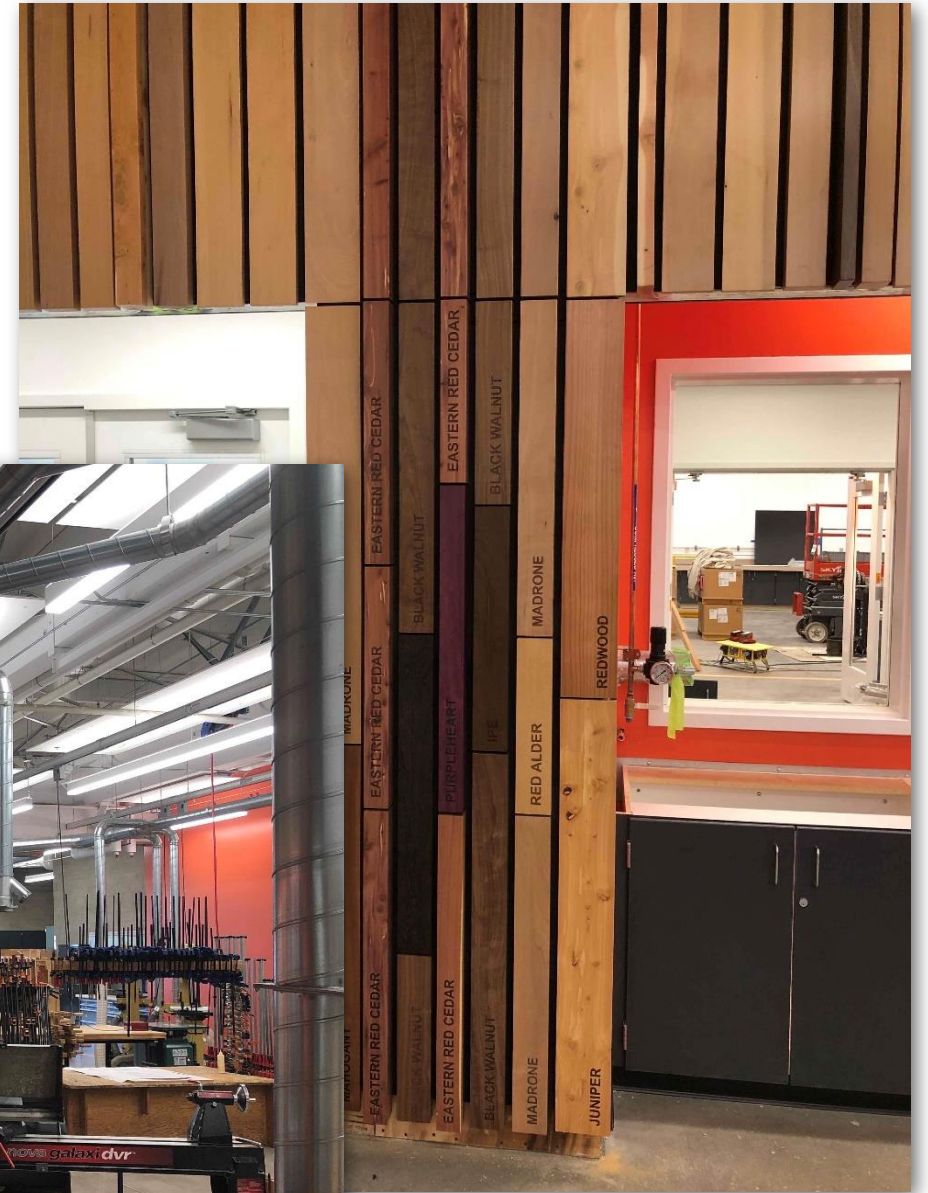
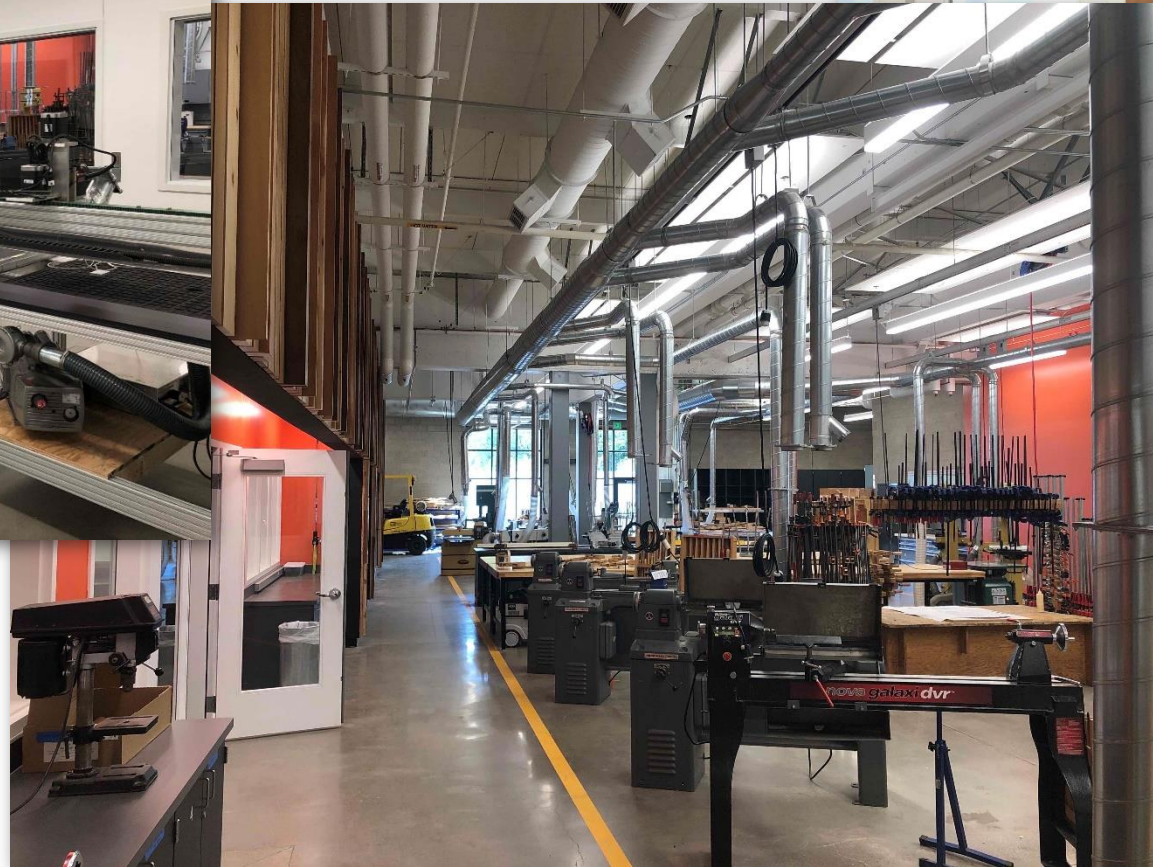
Crescent Valley High School New Metals Area



**Crescent Valley
High School
New Welding
Booths**



Crescent Valley High School New Woods Areas



Crescent Valley High School Outdoor Kiln and Yard Area



Crescent Valley High School Parking Lot Improvements



Corvallis High School

- All buildings are open for school
- There are some items, such as the overhead glass doors at the auto shop area, and the roof decking for the covered walkway, that have been delayed by supply chain challenges
- The bond team is working with CTE teaching staff to fine-tune the new installations to suit program adjustments and class operational needs

Corvallis High School Renovated Woods Area



Corvallis High School CTE Covered Work Area



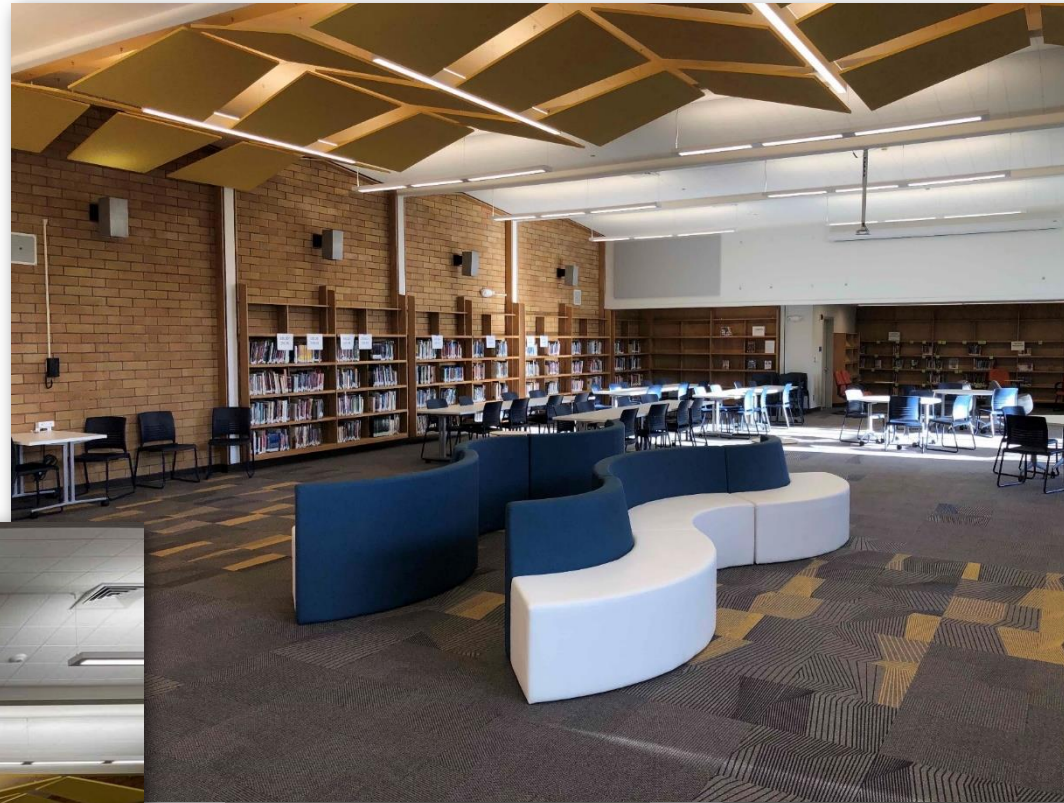
Corvallis High School Covered Walk – Getting the Cover!



Cheldelin Middle School

- The library is complete and operational
- Delivery of the new library circulation desk has been delayed by COVID, and currently forecast for next month
- The second phase of work has bid and Gerding is preparing their GMP This scope includes HVAC work and seismic upgrades.

Cheldelin Library Upgrade



Kathryn Jones Harrison & Letitia Carson Elementaries

- Kathryn Jones Harrison Elementary and Letitia Carson Elementary are both open for students
- Some work is underway, and the bulk of projects will proceed once building permits for Phase 2 are in hand
- Many thanks to staff and mover teams for managing the furnishings and contents to achieve the openings

Adams Elementary

- Adams is out for bids now. Construction will start spring of 2022
- Phasing & logistics planning and scheduling are underway
- The early electrical work project is paused, pending switchgear delivery

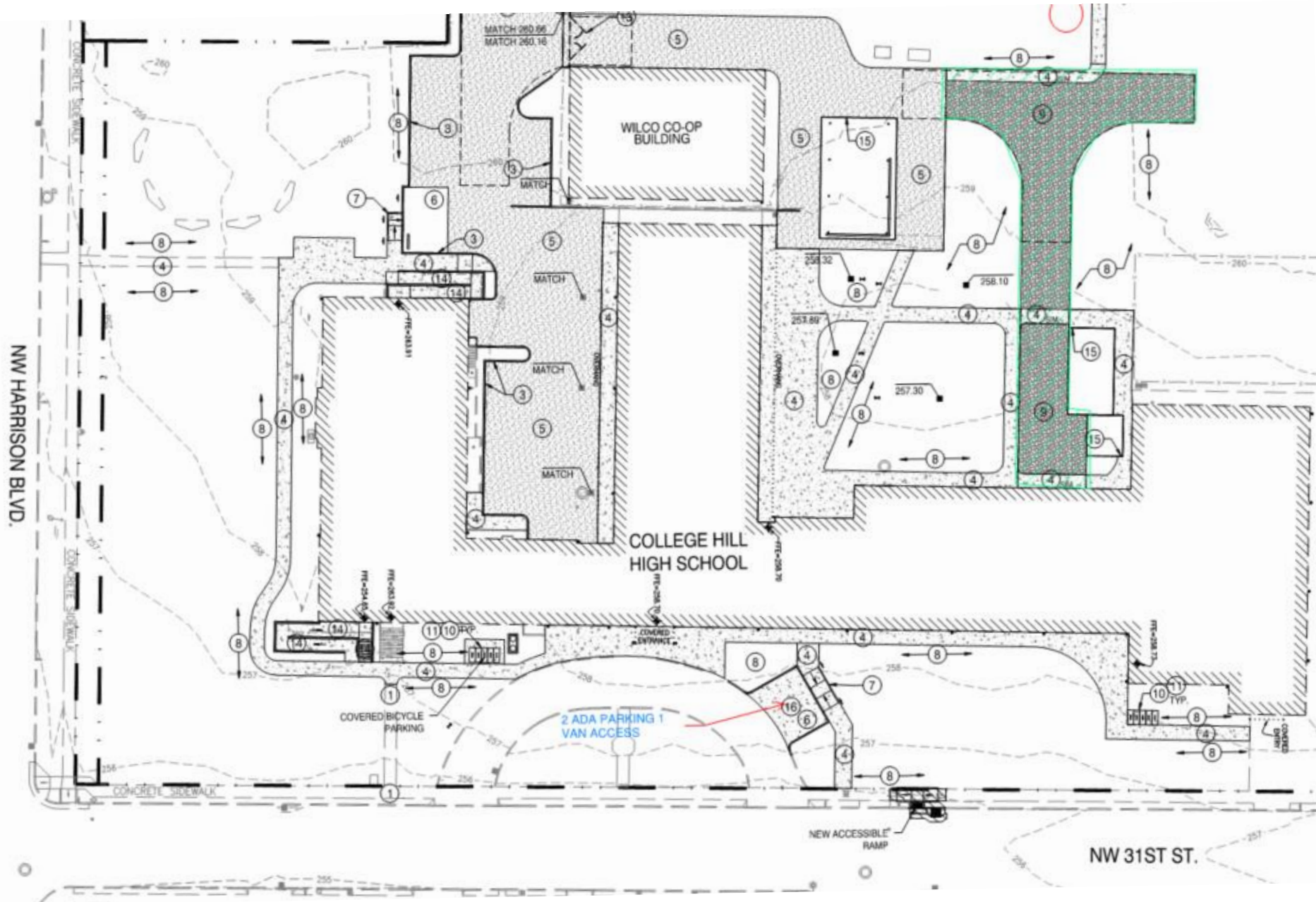
Mountain View & Franklin

- The team has gone through a value engineering exercise focusing on maintaining the educational programs and bond promises
- We are scheduling design presentations for the board
- The projects will go out to bid this fall

College Hill

- The team has gone through a value engineering exercise focusing on maintaining the educational programs and bond promises. Reductions included:
 - Front driveway changes (see plan following)
 - Various changes to piping systems
 - Leaving existing in-classroom restrooms intact instead of renovating
 - Minimize improvements of the lower level
- Phasing and scheduling plans are being prepared
- The project will bid late this year

College Hill Site





Questions?