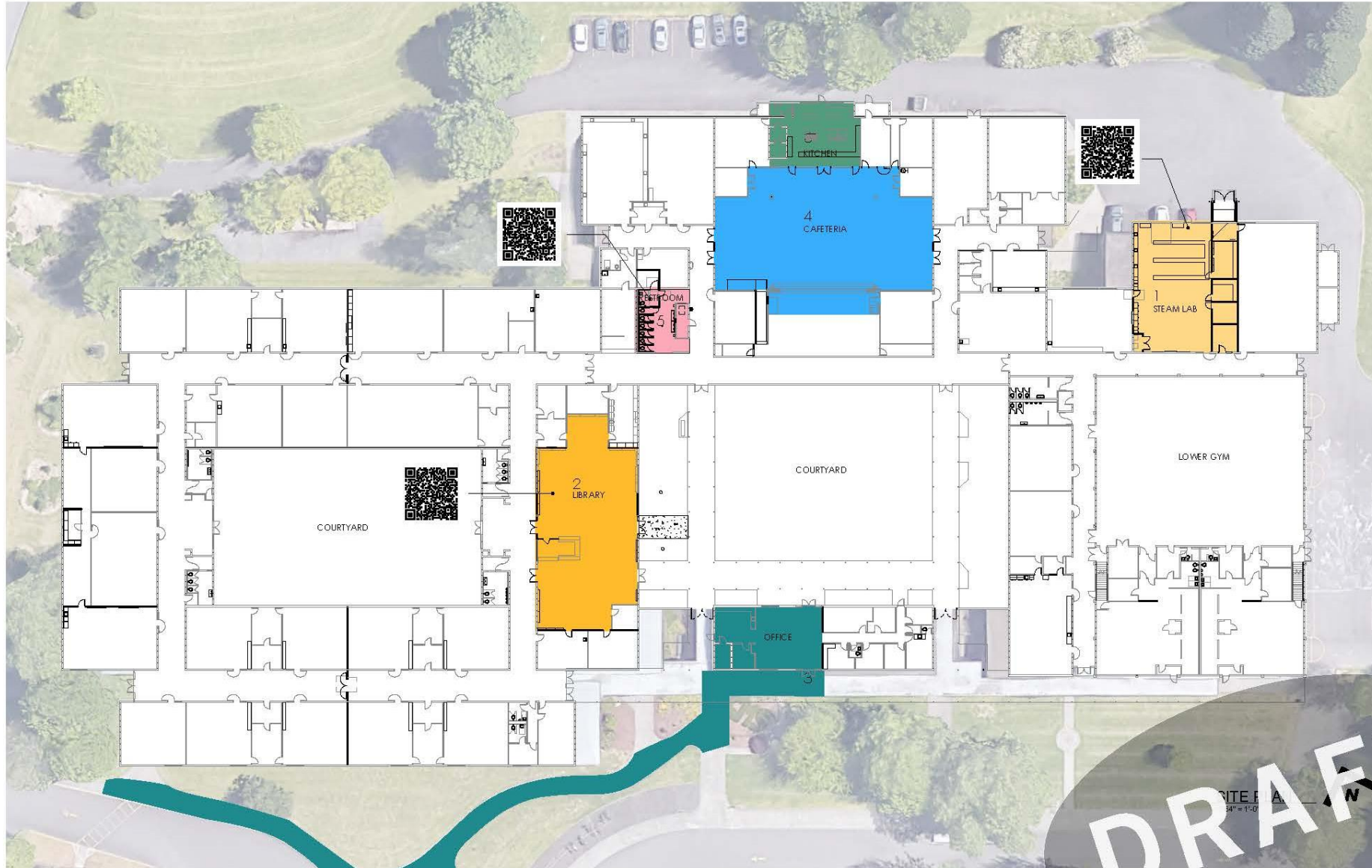


CHELDELIN MIDDLE SCHOOL – BOND PROMISE REVIEW + UPDATE



BOND PROJ

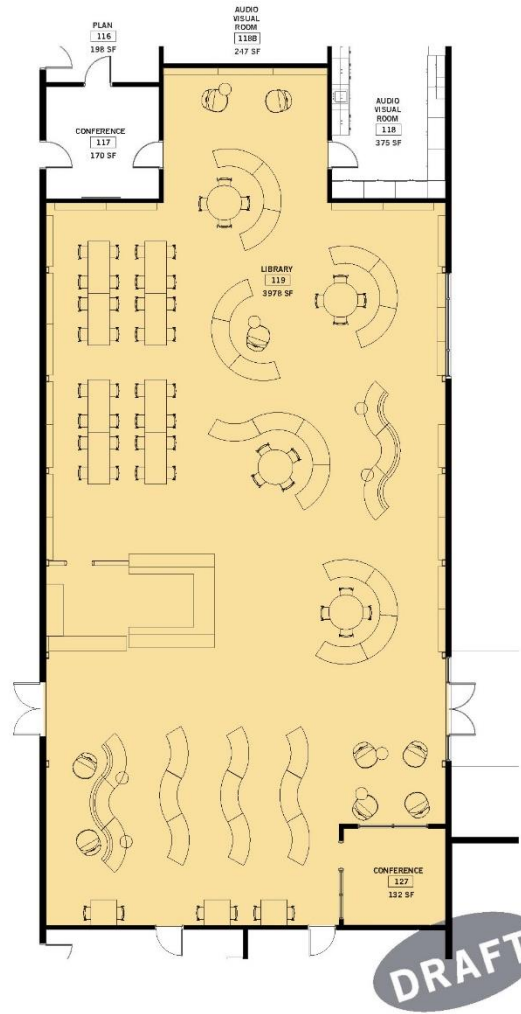
- 1 RENOVATE CLASSROOM TO CREATE STEAM LAB
- 2 RENOVATE LIBRARY / MEDIA CENTER
- 3 IMPROVE ADA ACCESS
- 4 RENOVATE CAFETERIA
- 5 RENOVATE RESTROOMS
- 6 REPLACE KITCHEN FLOORING

ADDITIONAL IMPROVEMENTS

- UPGRADE MECHANICAL, ELECTRICAL, AND PLUMBING
- IMPROVE EMERGENCY LIGHTING
- IMPROVE SEISMIC SAFETY

DRAFT

CHELDELIN MIDDLE SCHOOL – CURRENT DESIGN



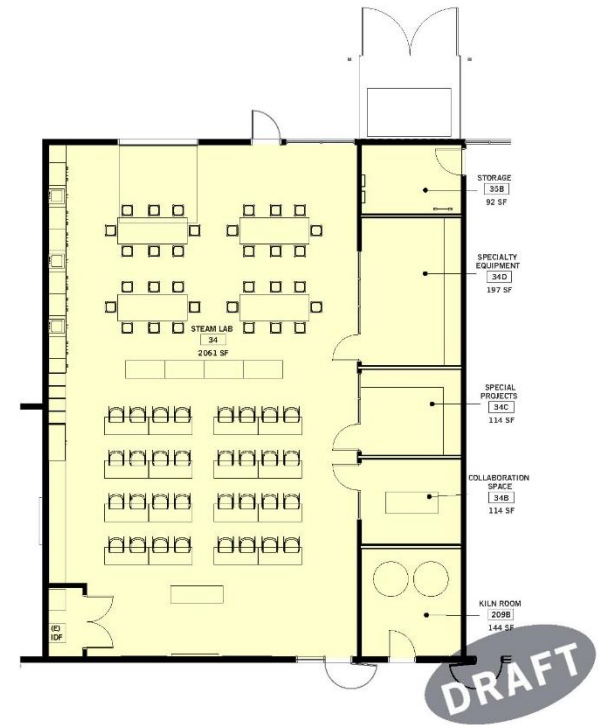
LIBRARY
1/8" = 1'



RESTROOM
1/8" = 1'



ADMINISTRATION
1/8" = 1'



STEAM LAB
1/8" = 1'

2018 BOND PROMISE

100% DESIGN DEVELOPMENT

1. Schools are safe, welcoming, controlled, accessible facilities with purposeful movement and integrated communication throughout the campus with a clear, intentional layout and visibility.
2. Site design provides outdoor spaces that enhance safety and meet the needs of the school. Solutions need to address traffic, parking, clear site circulation and connections for each mode of transportation.
3. Exterior site and landscape design should incorporate solutions that are easy and efficient to maintain. Landscape design should prioritize low maintenance selections that are appropriate to this region, resilient to weather extremes, and require little to no additional irrigation.
4. Indoor and outdoor spaces provide all students all-season opportunities to connect to the larger physical world around them through active learning, creative play and exploration.
5. Buildings and systems are standardized, yet adaptable, solutions which are energy efficient, sustainable, easy to maintain, inclusive and cost efficient.
6. Technology infrastructure of each school is designed to provide a reliable, resilient network with audio/visual connections for teaching, learning, communication and community use.
7. Mental health and well-being for all is encouraged and supported. A diverse, adaptive and inclusive range of spatial attributes honoring age, citizenship, color, sex, sexual orientation, ability, gender expression, gender identity, national origin, parental status, marital status, race and religion is incorporated.
8. The learning environment is inclusive and reflects, supports, and inspires the education of all.
9. Common use spaces, classrooms and student learning areas are flexible and adaptable. Solutions encourage collaboration and enhance student learning opportunities.
10. Gender inclusive spaces are provided throughout the building that support safety, privacy of choice and individual space.
11. Health and wellness spaces are safe, flexible, and designated for a variety of learning and recreational activities.
12. Connectedness is encouraged through creating spaces that are culturally inclusive, sensitive, warm, welcoming and provide opportunities for spontaneous interaction, conversation and collaboration, fostering student success for all.
13. Community access to schools is reasonably provided to flexible, multi-use spaces.

CHELDELIN MIDDLE SCHOOL - RENOVATION



RESTROOM



DRAFT



RESTROOM



DRAFT



RESTROOM



DRAFT



RESTROOM



DRAFT

2018 BOND PROMISE

100% DESIGN DEVELOPMENT

1. Schools are safe, welcoming, controlled, accessible facilities with purposeful movement and integrated communication throughout the campus with a clear, intentional layout and visibility.
2. Site design provides outdoor spaces that enhance safety and meet the needs of the school. Solutions need to address traffic, parking, clear site circulation and connections for each mode of transportation.
3. Exterior site and landscape design should incorporate solutions that are easy and efficient to maintain. Landscape design should prioritize low maintenance selections that are appropriate to this region, resilient to weather extremes, and require little to no additional irrigation.
4. Indoor and outdoor spaces provide all students all-season opportunities to connect to the larger physical world around them through active learning, creative play and exploration.
5. Buildings and systems are standardized, yet adaptable, solutions which are energy efficient, sustainable, easy to maintain, inclusive and cost efficient.
6. Technology infrastructure of each school is designed to provide a reliable, resilient network with audio/visual connections for teaching, learning, communication and community use.
7. Mental health and well-being for all is encouraged and supported. A diverse, adaptive and inclusive range of spatial attributes honoring age, citizenship, color, sex, sexual orientation, ability, gender expression, gender identity, national origin, parental status, marital status, race and religion is incorporated.
8. The learning environment is inclusive and reflects, supports, and inspires the education of all.
9. Common use spaces, classrooms and student learning areas are flexible and adaptable. Solutions encourage collaboration and enhance student learning opportunities.
10. Gender inclusive spaces are provided throughout the building that support safety, privacy of choice and individual space.
11. Health and wellness spaces are safe, flexible, and designated for a variety of learning and recreational activities.
12. Connectedness is encouraged through creating spaces that are culturally inclusive, sensitive, warm, welcoming and provide opportunities for spontaneous interaction, conversation and collaboration, fostering student success for all.
13. Community access to schools is reasonably provided to flexible, multi-use spaces.

CHELDELIN MIDDLE SCHOOL - RENOVATION



STEAM LAB - NW



DRAFT



STEAM LAB - NE



DRAFT



STEAM LAB - SW



DRAFT



STEAM LAB - SE



DRAFT

2018 BOND PROMISE

100% DESIGN DEVELOPMENT

1. Schools are safe, welcoming, controlled, accessible facilities with purposeful movement and integrated communication throughout the campus with a clear, intentional layout and visibility.
2. Site design provides outdoor spaces that enhance safety and meet the needs of the school. Solutions need to address traffic, parking, clear site circulation and connections for each mode of transportation.
3. Exterior site and landscape design should incorporate solutions that are easy and efficient to maintain. Landscape design should prioritize low maintenance selections that are appropriate to this region, resilient to weather extremes, and require little to no additional irrigation.
4. Indoor and outdoor spaces provide all students all-season opportunities to connect to the larger physical world around them through active learning, creative play and exploration.
5. Buildings and systems are standardized, yet adaptable, solutions which are energy efficient, sustainable, easy to maintain, inclusive and cost efficient.
6. Technology infrastructure of each school is designed to provide a reliable, resilient network with audio/visual connections for teaching, learning, communication and community use.
7. Mental health and well-being for all is encouraged and supported. A diverse, adaptive and inclusive range of spatial attributes honoring age, citizenship, color, sex, sexual orientation, ability, gender expression, gender identity, national origin, parental status, marital status, race and religion is incorporated.
8. The learning environment is inclusive and reflects, supports, and inspires the education of all.
9. Common use spaces, classrooms and student learning areas are flexible and adaptable. Solutions encourage collaboration and enhance student learning opportunities.
10. Gender inclusive spaces are provided throughout the building that support safety, privacy of choice and individual space.
11. Health and wellness spaces are safe, flexible, and designated for a variety of learning and recreational activities.
12. Connectedness is encouraged through creating spaces that are culturally inclusive, sensitive, warm, welcoming and provide opportunities for spontaneous interaction, conversation and collaboration, fostering student success for all.
13. Community access to schools is reasonably provided to flexible, multi-use spaces.

CHELDELIN MIDDLE SCHOOL - RENOVATION



LIBRARY - NE



DRAFT



LIBRARY - SW



DRAFT



LIBRARY - NW



DRAFT



LIBRARY - SE



DRAFT