



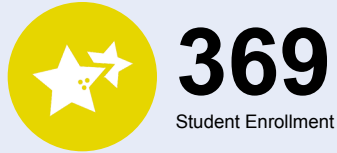
OREGON AT-A-GLANCE SCHOOL PROFILE

Garfield Elementary School

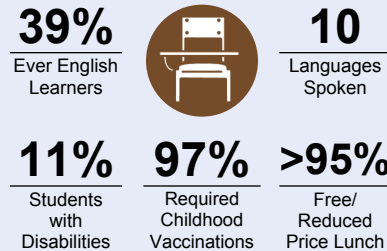
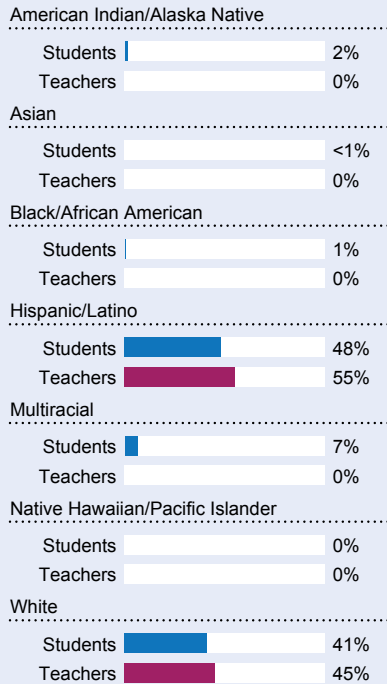
PRINCIPAL: Nancy Davila Williams | GRADES: K-5 | 1205 NW Garfield Ave, Corvallis 97330 | 541-757-5941

School Environment

Students We Serve



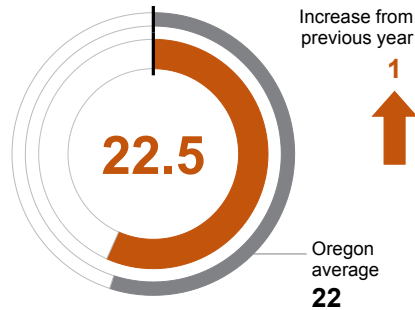
DEMOGRAPHICS



*<10 students or data unavailable

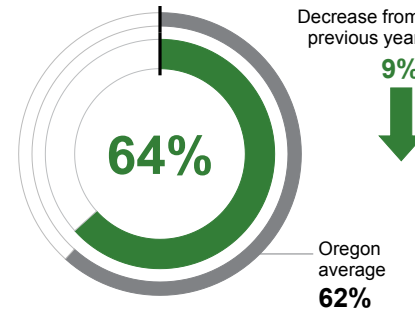
CLASS SIZE

Median class size.



REGULAR ATTENDERS

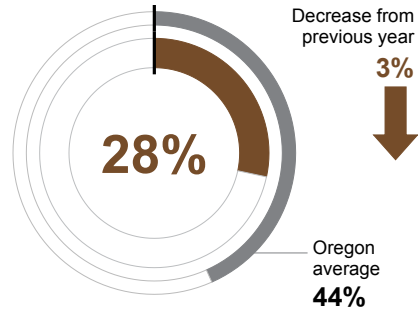
Students who attended more than 90% of their enrolled school days.



Academic Success

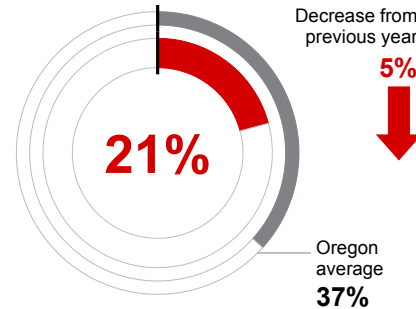
ENGLISH LANGUAGE ARTS

Students meeting state grade-level expectations.



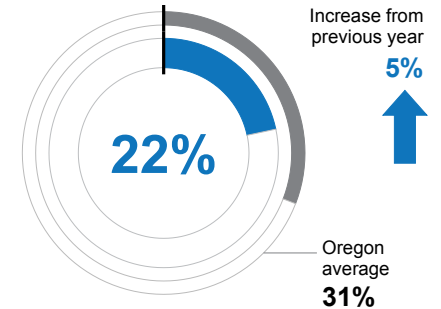
MATHEMATICS

Students meeting state grade-level expectations.



SCIENCE

Students meeting state grade-level expectations.



School Goals

Garfield is committed to knowing the academic strengths and needs of each student, and using this knowledge to guide the instructional program for each child. We are also committed to authentic engagement in both native and non-dominant language instruction regardless of race, language proficiency, or school readiness. Beginning in Kindergarten, students are in a learning environment that is 70% Spanish. By 3rd grade, this shifts to 50%. Garfield staff are dedicated to equity based intervention services in order to achieve the district targets of Closing the Opportunity Gap, Growth for All, and Every Child a Graduate.

State Goals

The Oregon Department of Education is partnering with school districts and local communities to ensure a 90% on-time, four year graduation rate by 2027. To progress toward this goal, the state will prioritize efforts to improve attendance, provide a well-rounded education, invest in implementing culturally responsive practices, and promote continuous improvement to close opportunity and achievement gaps for historically and currently underserved students.

Safe & Welcoming Environment

PBIS is a program designed to teach respect, responsibility, and safety at our school. We encourage students to make positive behavior choices by implementing this program. Through instruction and regular practice, all staff implement a consistent set of behavior expectations and rules. When students respond in unexpected ways, we view it as an opportunity for re-teaching, not punishment.



OREGON AT-A-GLANCE SCHOOL PROFILE CONTINUED

Garfield Elementary School

Outcomes

Our Staff (rounded FTE)



26
Teachers



15
Educational assistants



1
Counselors/
Psychologists/
Social Workers



89%
Average teacher retention rate over the past three years



63%
% of licensed teachers with more than 3 years of experience



No
Same principal in the last 3 years

REGULAR ATTENDERS

American Indian/Alaska Native	<10 students or data unavailable
Asian	<10 students or data unavailable
Black/African American	<10 students or data unavailable
Hispanic/Latino	61%
Multiracial	58%
Native Hawaiian/Pacific Islander	<10 students or data unavailable
White	65%
Free/Reduced Price Lunch	64%
Ever English Learner	66%
Students with Disabilities	55%
Migrant	<10 students or data unavailable
Homeless	83%
Students in Foster Care	<10 students or data unavailable
Military Connected	80%
Talented and Gifted	60%
Female	62%
Male	65%
Non-Binary	<10 students or data unavailable

ENGLISH LANGUAGE ARTS

<10 students or data unavailable
<10 students or data unavailable
<10 students or data unavailable
11%
36%
<10 students or data unavailable
50%
28%
8%
16%
<10 students or data unavailable
12%
<10 students or data unavailable
<10 students or data unavailable
60%
28%
28%
<10 students or data unavailable

MATHEMATICS

<10 students or data unavailable
<10 students or data unavailable
<10 students or data unavailable
6%
33%
<10 students or data unavailable
40%
21%
6%
6%
<10 students or data unavailable
7%
<10 students or data unavailable
<10 students or data unavailable
60%
13%
29%
<10 students or data unavailable

About Our School

BULLYING, HARASSMENT, AND SAFETY POLICIES

Corvallis schools are committed to providing a safe and positive learning environment for all students. Our school's response to bullying or harassment is to put a stop to the behavior quickly and consistently, provide students with positive behavioral supports, and to send the message that bullying and harassment are not acceptable. Programs include:

- Collaborative Problem Solving
- Look for the Good
- Second Steps
- Child Protection Unit - taught by our counselor
- Student Behavior Support Staff (Social Skill Groups)
- Safe Routes to Schools
- Standard Response Protocol (SRP) for emergency response. School emergency preparedness involves staff, parents, students, school resource officers, emergency responders, and the community.

EXTRACURRICULAR ACTIVITIES

Corvallis schools offer multiple opportunities during and after school hours.

- Choir
- Oregon Battle of the Books (both English and Spanish)
- Lego Robotics
- Gecko Club
- Arabic Club
- Student Leadership
- Strings
- Chess Club

PARENT ENGAGEMENT

Parents play a vital role in Corvallis schools. We welcome parent volunteers in our buildings and create multiple opportunities for parents to engage in our school communities. Examples of parent engagement opportunities at Garfield include:

- Teacher Meet and Greet
- Classroom Volunteer
- Curriculum Night and Picnic
- Weekly Parent Group
- Wellness Initiatives for Students
- International Night
- PTA sponsored events such as Jog-a-thon, Books & Breakfast, Welcome Back Coffee, End of Year Pool Party, and Assemblies

COMMUNITY ENGAGEMENT

The Corvallis community provides multiple opportunities to partner with our schools and enrich the lives of our students. Community organizations who partner with our school include:

- Boys & Girls Club of Corvallis
- Benton County 4H
- Hewlett Packard - Hour of Code
- Trillium Family Services, Old Mill Center, and Benton County Health Navigator
- Head Start Preschool
- OSU/WOU Student Teachers
- Bicycle Education for 5th grade
- City Serve (faith communities volunteering with physical plant care)