

Project Scope

Bond Promise Items:

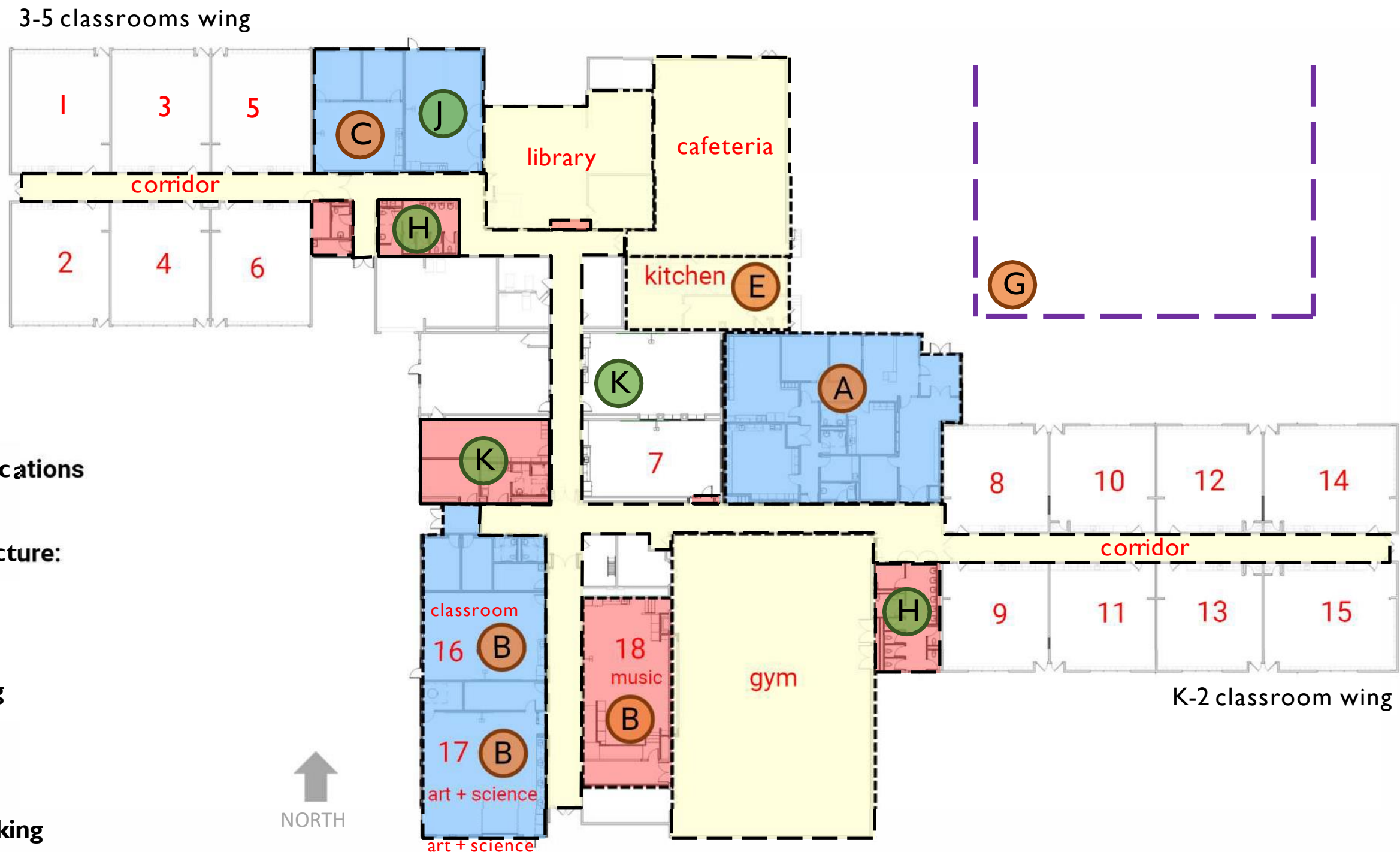
- A** Relocate and secure front entry & office
- B** Add three classrooms (remove 4 portables)
- C** Create collaborative – small group learning area
- D** Upgrade finishes in hallways and shared spaces, including floors, paint and ceilings.
 - Hallways
 - Library
 - Cafeteria
 - Gym/Stage
- E** Replace kitchen flooring
- F** Improve seismic safety
- F** Improve emergency lighting
- F** Enhance emergency communications system
- F** Upgrade mechanical infrastructure:
 - Electrical systems
 - HVAC systems
 - Plumbing systems
- F** Install energy efficient lighting
- F** Improve ADA accessibility
- G** Improve Site Circulation & Parking

Opportunity Items:

- H** Restroom renovation
- J** Testing / Maker
- K** Student Support Suite Renovations

Legend:

- D** New Construction and/or Heavy Renovation
- F** Renovation
- D** Common Area Finish Upgrades
- F** Misc. Upgrades

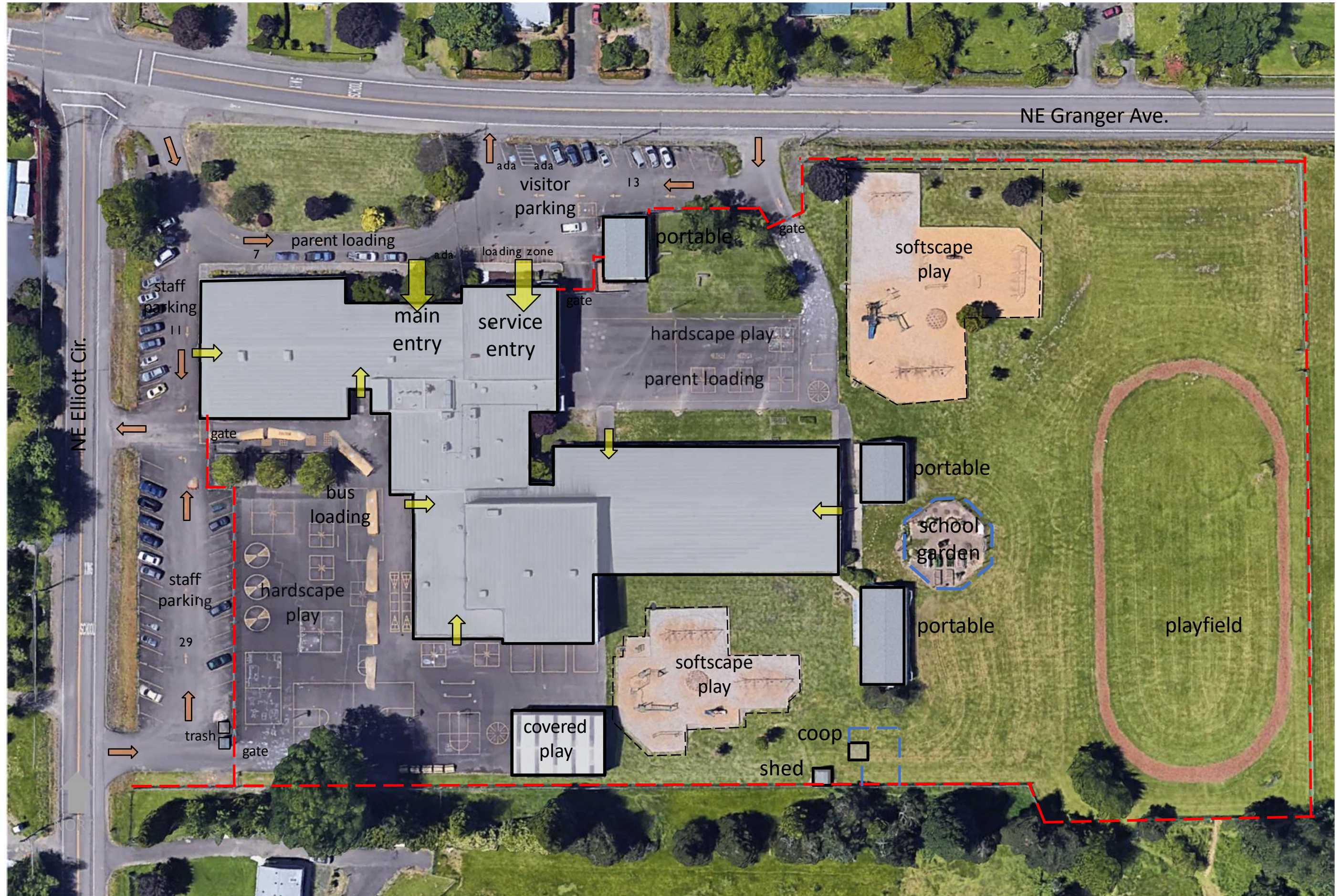


NORTH



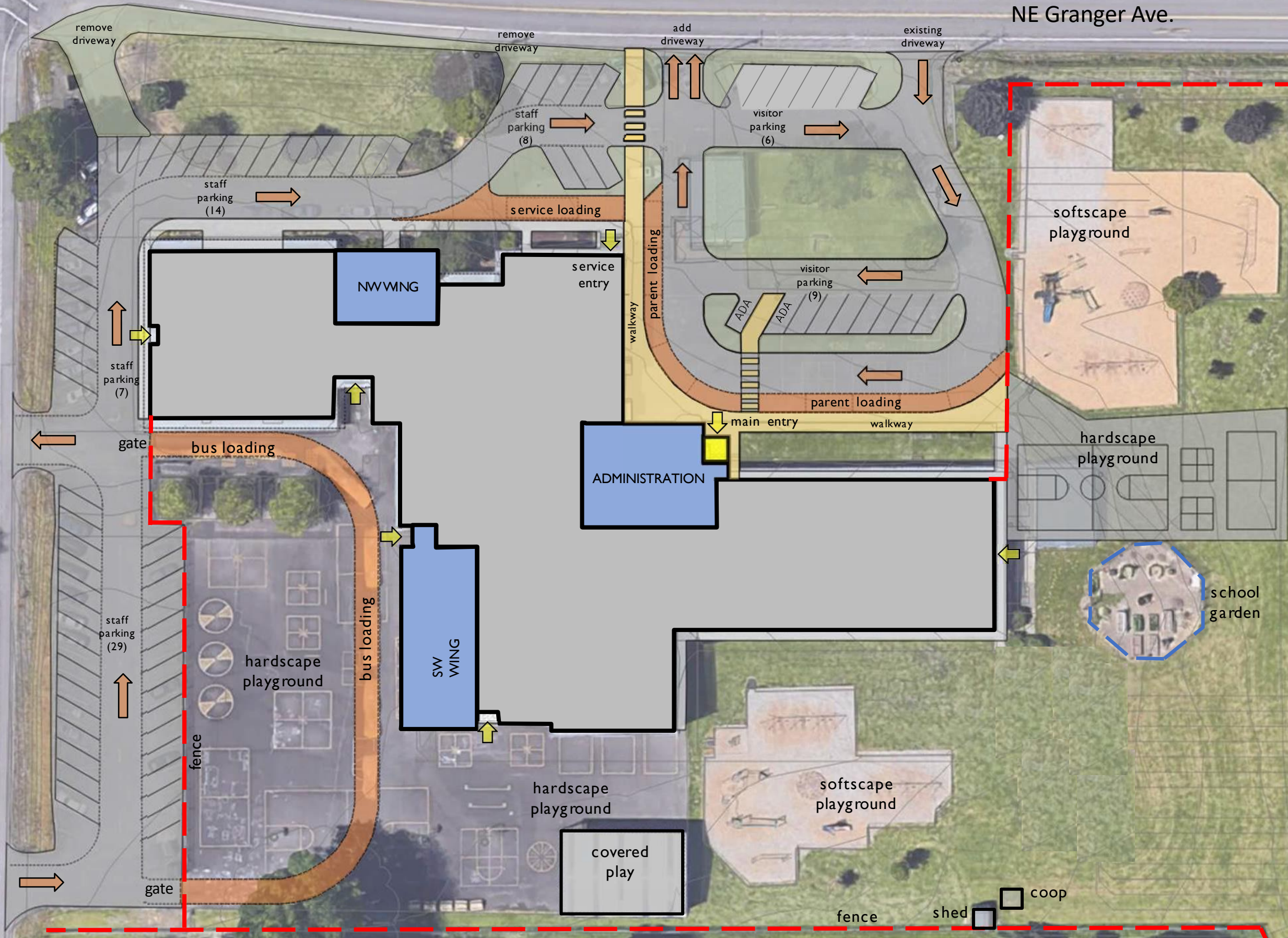
Existing Site Overall

Parking count: 53



NE Elliott Cir.

NE Granger Ave.



fence

softscape playground

hardscape playground

school garden

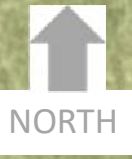
softscape playground

covered play

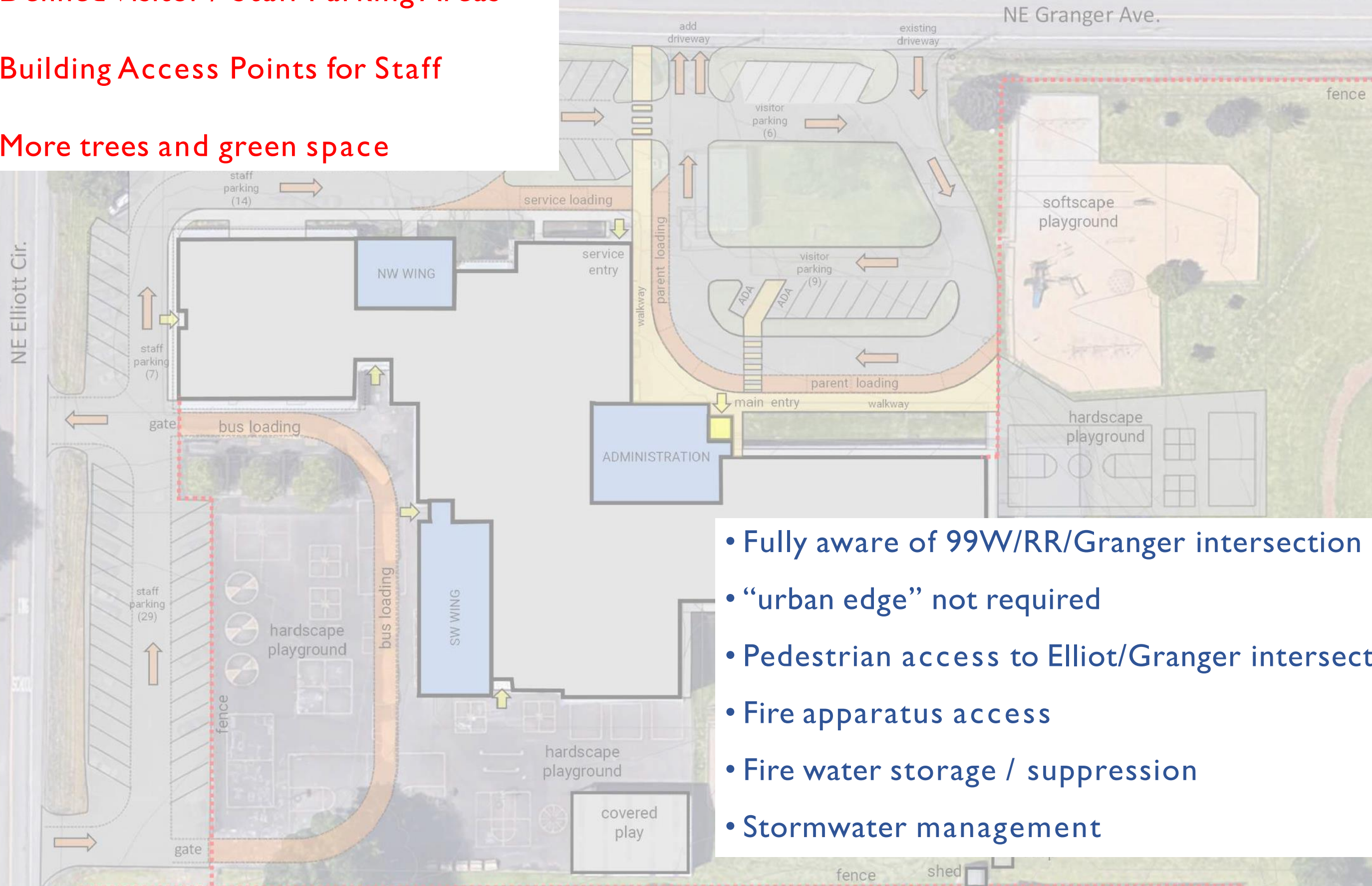
fence

shed

coop



- Defined Visitor / Staff Parking Areas
- Building Access Points for Staff
- More trees and green space

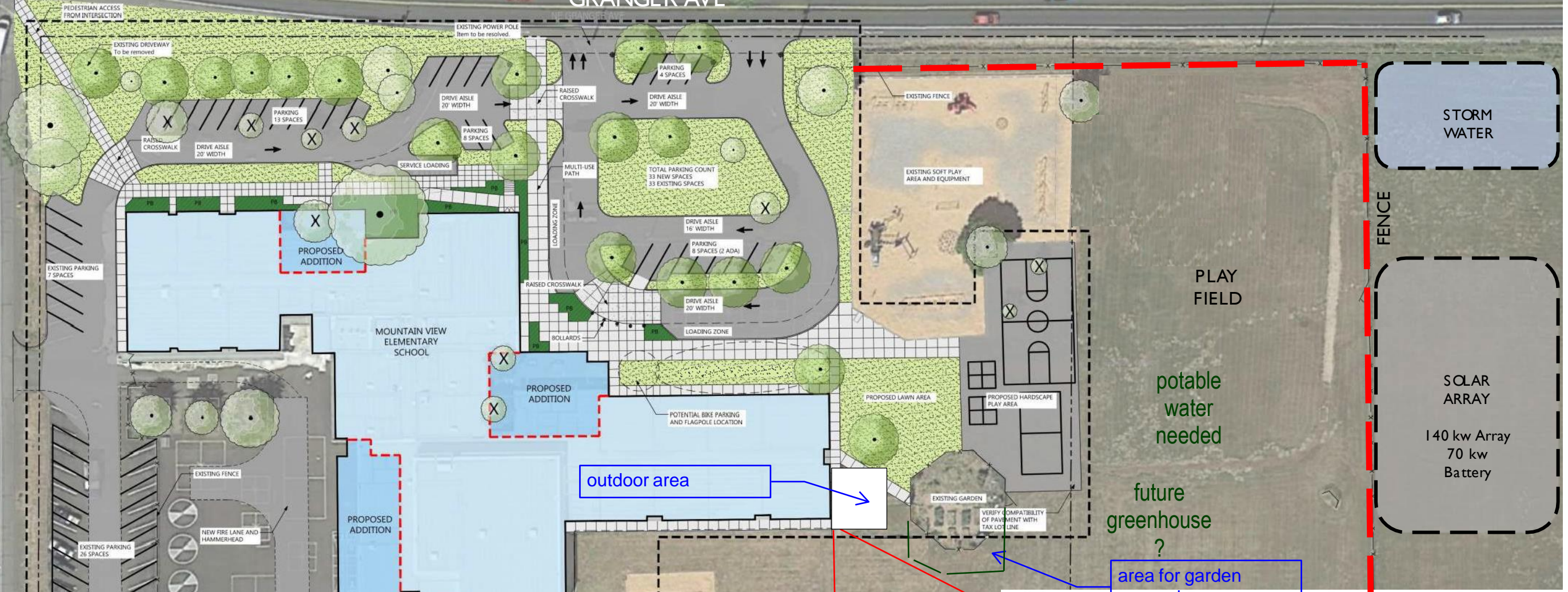


- Fully aware of 99W/RR/Granger intersection
- “urban edge” not required
- Pedestrian access to Elliot/Granger intersection
- Fire apparatus access
- Fire water storage / suppression
- Stormwater management



GRANGER AVE

ELLIOT CIRCLE



outdoor area

potable water needed

future greenhouse ?

area for garden expansion

LEGEND

path to natural area gravel?

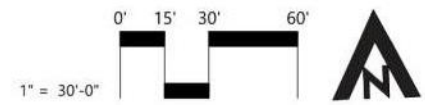
tree's no longer, need new

gravel path?

coop

shed

- LAWN
- STORMWATER FACILITY
- EXISTING FENCE
- AREA DRAIN
- PROPOSED TREE
- CONCRETE PAVING - VEHICULAR
- CONCRETE PAVING - PEDESTRIAN
- AC PAVING
- PLANT BED
- EXISTING TREE TO REMAIN
- EXISTING TREE TO BE REMOVED
- EXISTING R.O.W. LINE



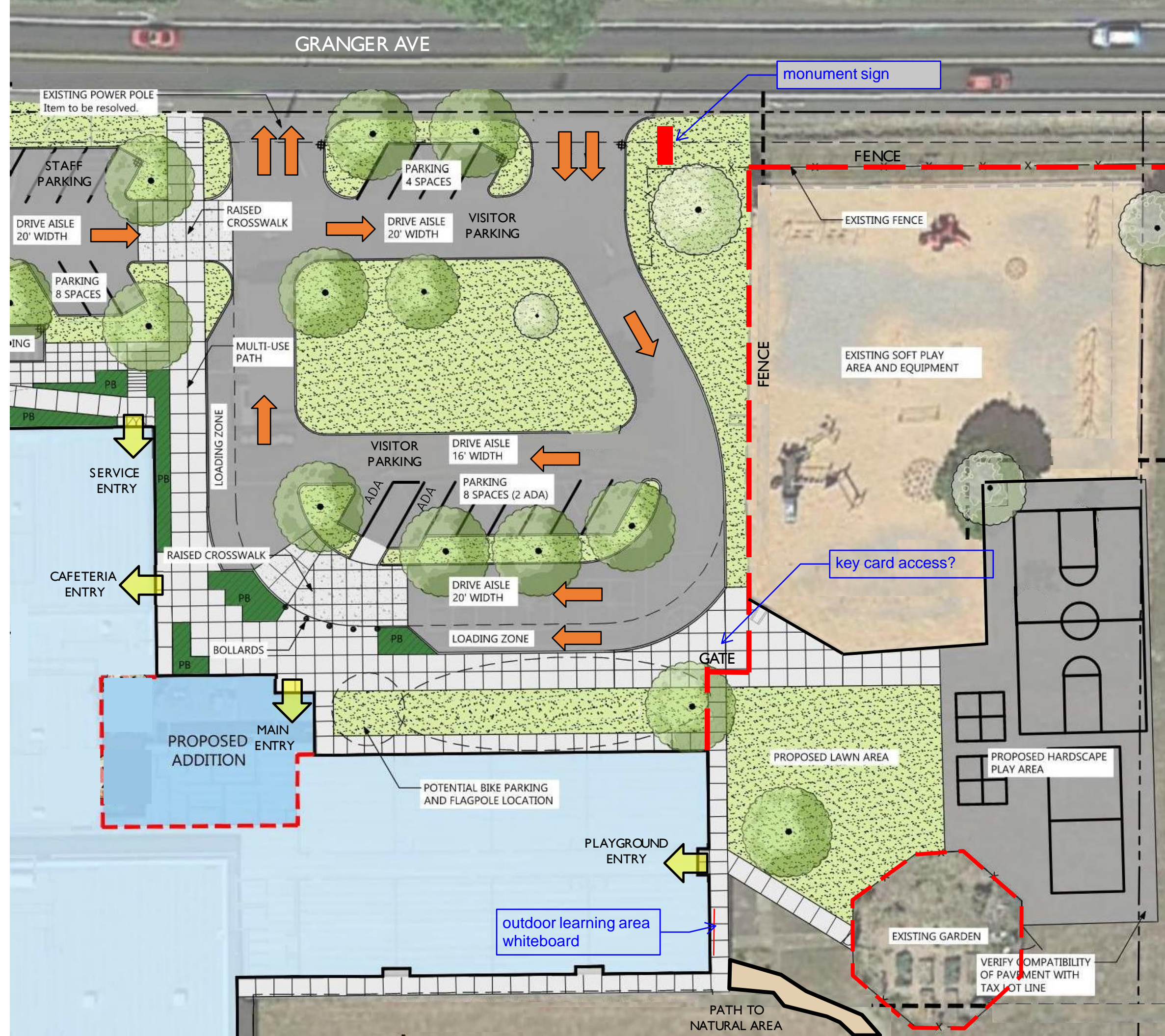
Site Design

Bond Promise Items:

- A** Relocate and secure front entry & office
- F** Improve ADA accessibility
- G** Improve Site Circulation & Parking

Design Guidance Principles(s):

- 2** Site design provides outdoor spaces that enhance safety and meet the needs of the school. Solutions need to address traffic, parking, clear site circulation and connections for each mode of transportation.
- 3** Exterior site and landscape design should incorporate solutions that are easy and efficient to maintain. Landscape design should prioritize low maintenance selections that are appropriate to this region, resilient to weather extremes, and require little to no additional irrigation
- 4** Indoor and outdoor spaces provide all students all-season opportunities to connect to the larger physical world around them through active learning, creative play and exploration.





MURAL



Site Plan

Bond Promise Items:

- A** Relocate and secure front entry & office
- F** Improve ADA accessibility
- G** Improve Site Circulation & Parking

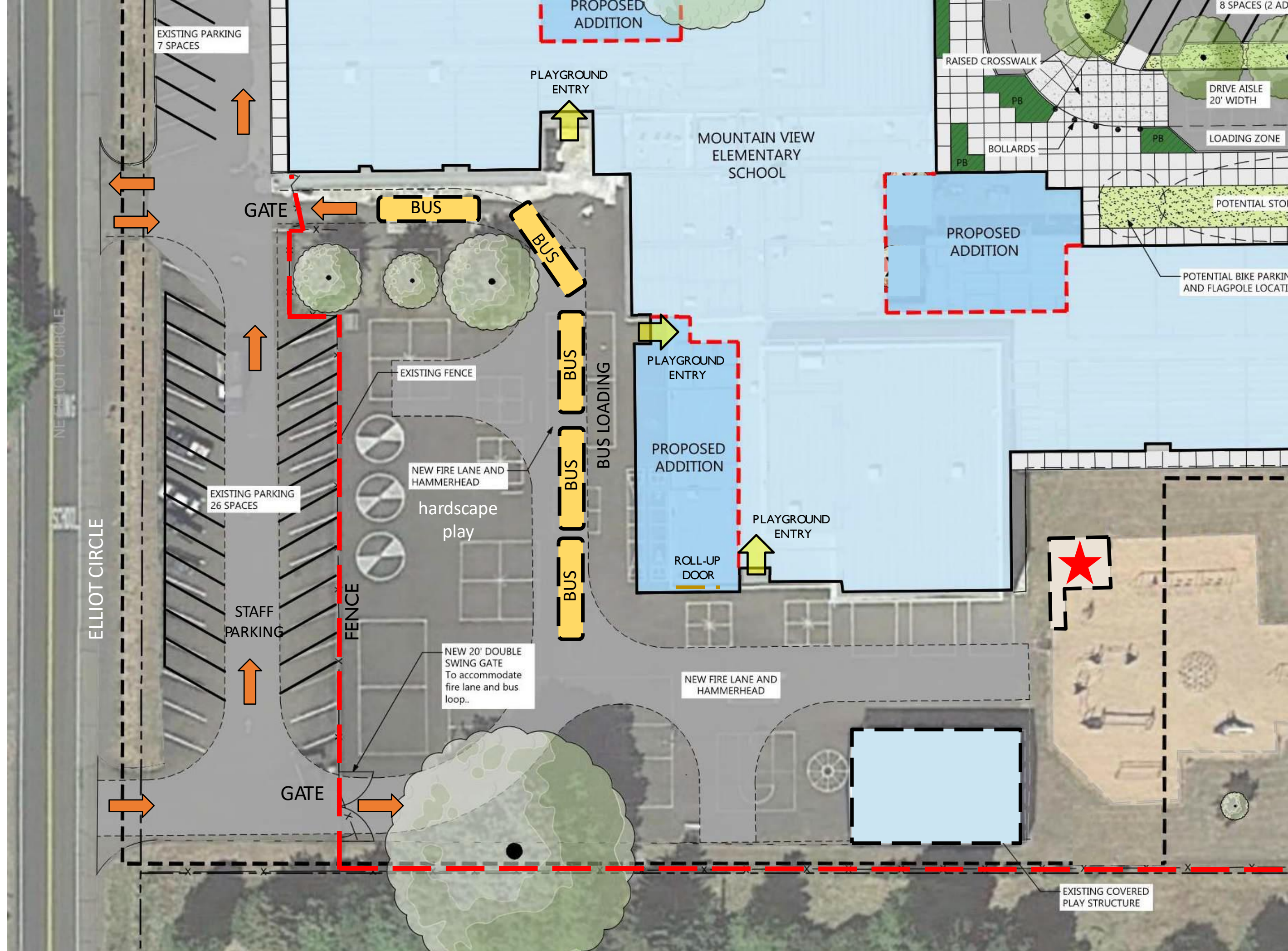


Site Plan

PLAYGROUND EQUIPMENT



https://www.youtube.com/watch?v=XyFlsZ3P_to



ELLIOTT CIRCLE

MOUNTAIN VIEW
ELEMENTARY
SCHOOL

EXISTING COVERED
PLAY STRUCTURE











5.19
2021



Conceptual Floor Plan

legend

-  learning
-  specialized learning
-  student support
-  commons / food service
-  library
-  physical education
-  administration
-  building support



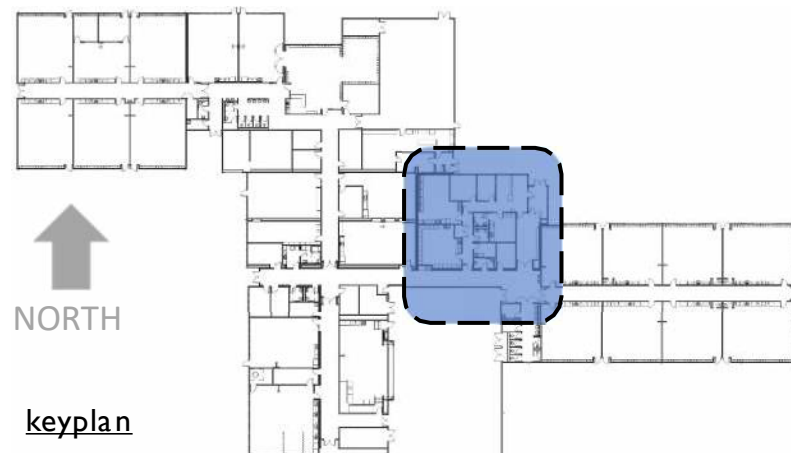
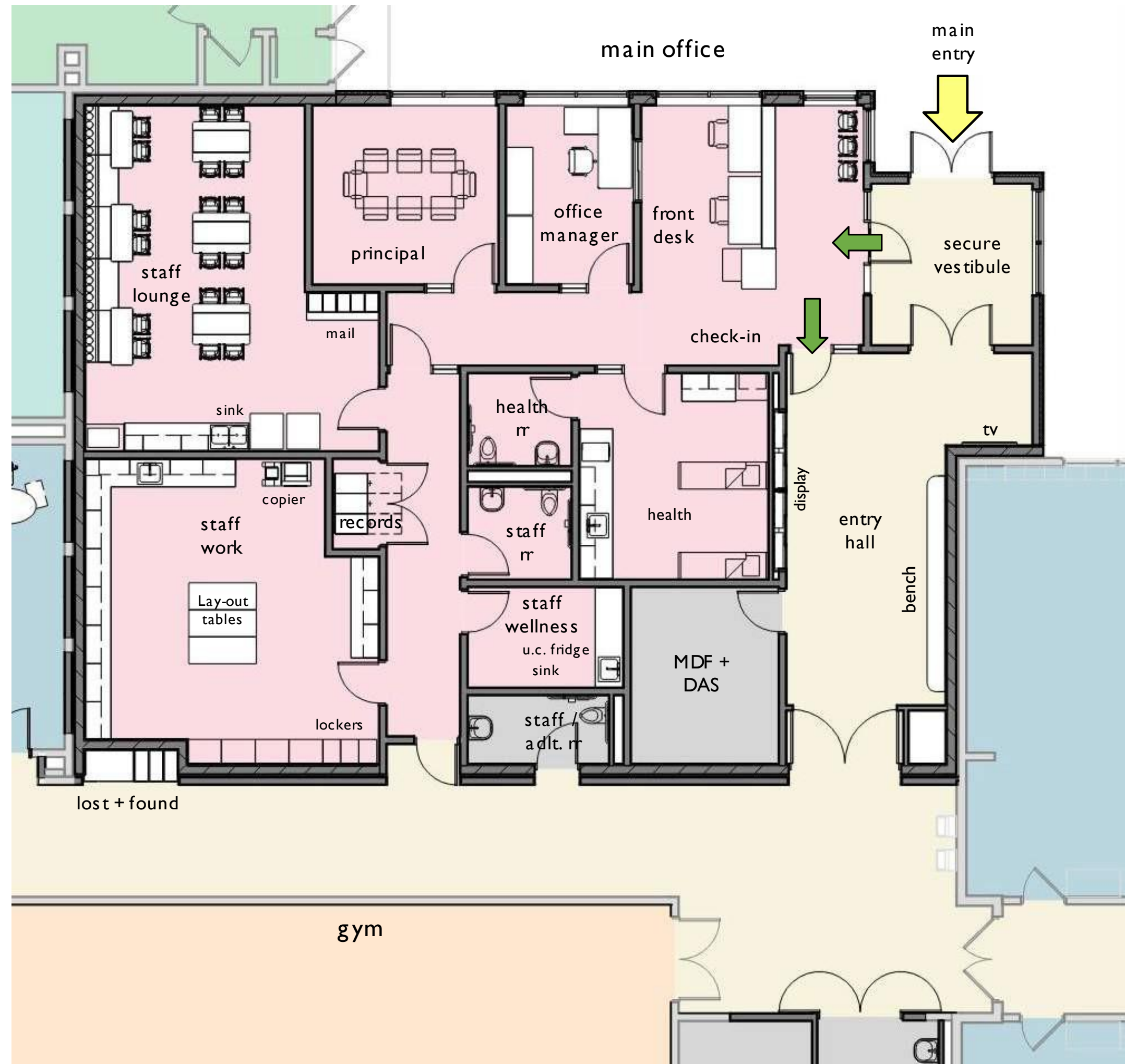
Front Office

Bond Promise Items:

- A** Relocate and secure front entry & office

Design Guidance Principles(s):

- 1** Schools are safe, welcoming, controlled, accessible facilities with purposeful movement and integrated communication throughout the campus with a clear, intentional layout and visibility.
- 7** Mental health and well-being for all is encouraged and supported.



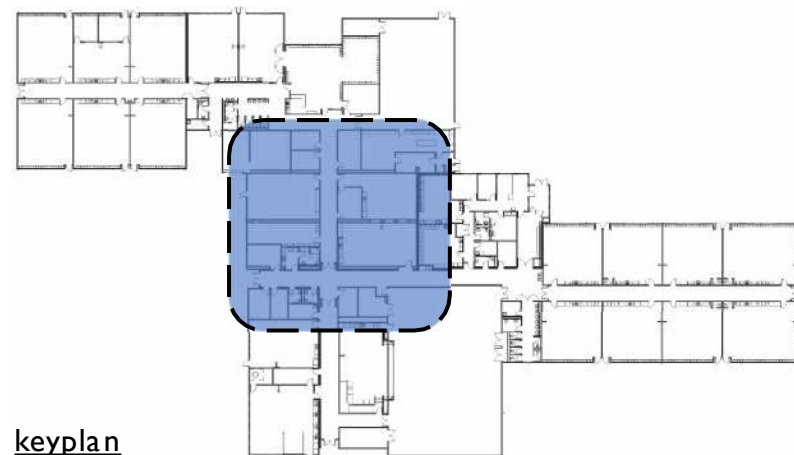
NORTH

keyplan

Student Support

Design Guidance Principles(s):

- 7 Mental health and well-being for all is encouraged and supported. A diverse, adaptive and inclusive range of spatial attributes honoring age, citizenship, color, sex, sexual orientation, ability, gender expression, gender identity, national origin, parental status, marital status, race and religion is incorporated.
- 13 Community access to schools is reasonably provided to flexible, multi-use spaces



keyplan



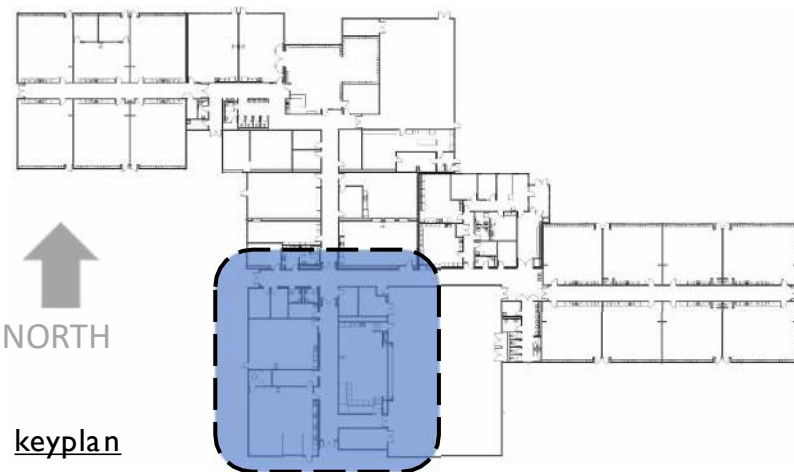
SW Learning Wing

Bond Promise Items:

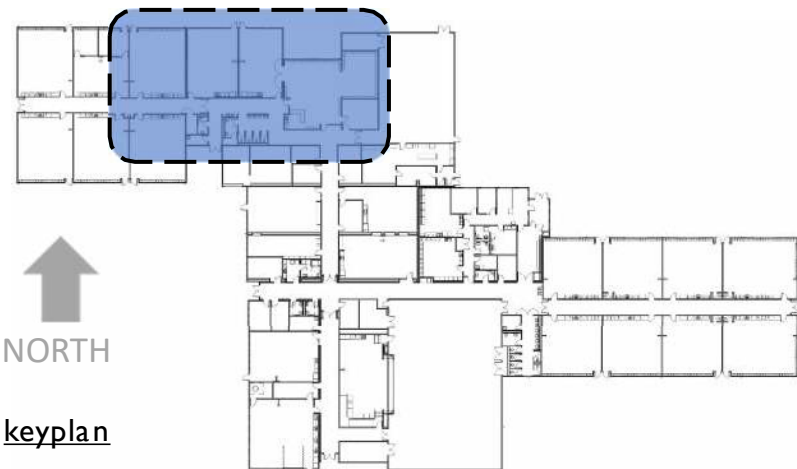
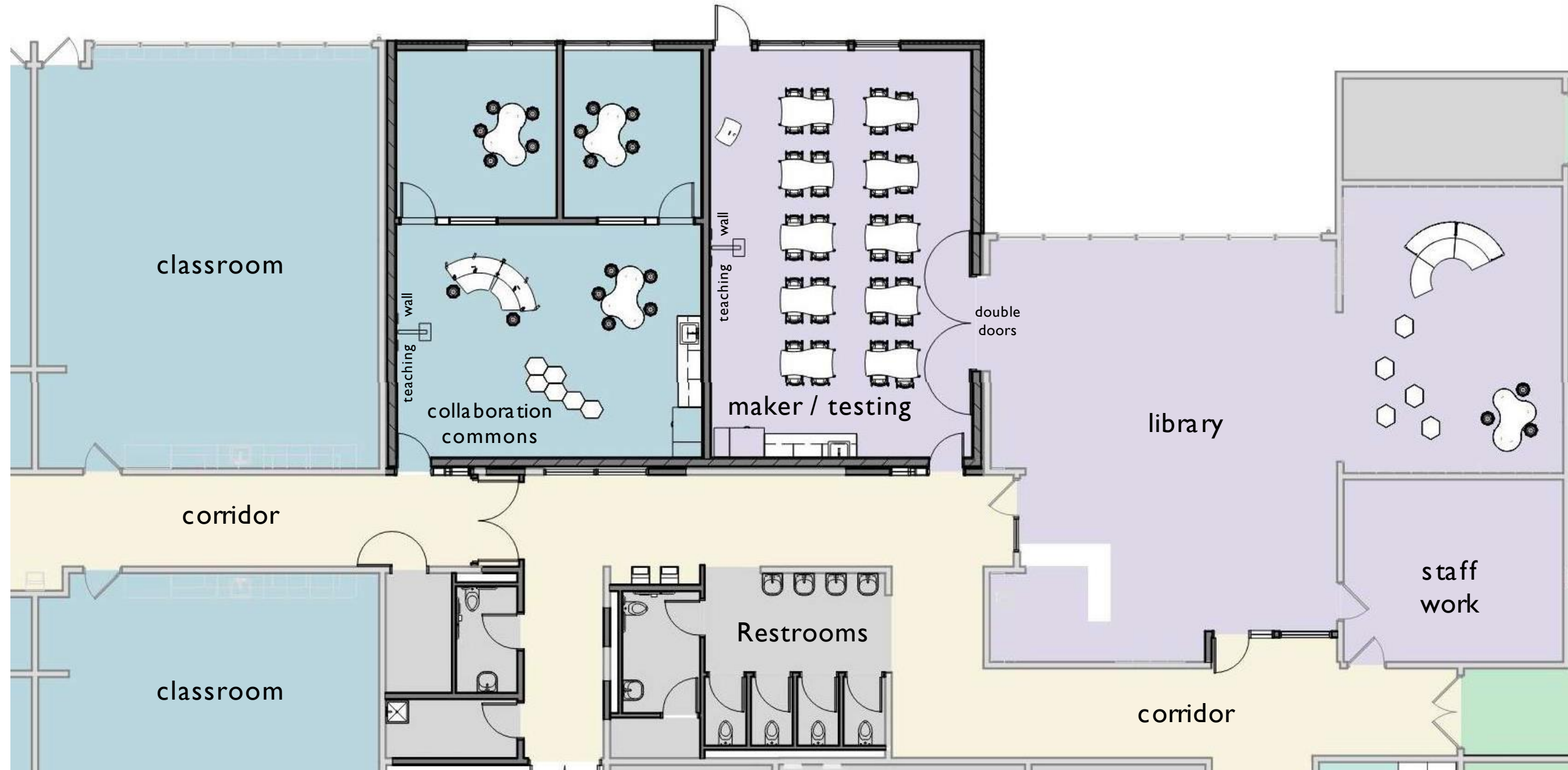
- B** Add three classrooms (remove 4 portables)
- F** Improve ADA accessibility

Design Guidance Principles(s):

- 8** The learning environment is inclusive and reflects, supports, and inspires the education of all.



NW Learning Wing



Bond Promise Items:

- C** Create collaborative – small group learning area

Design Guidance Principles(s):

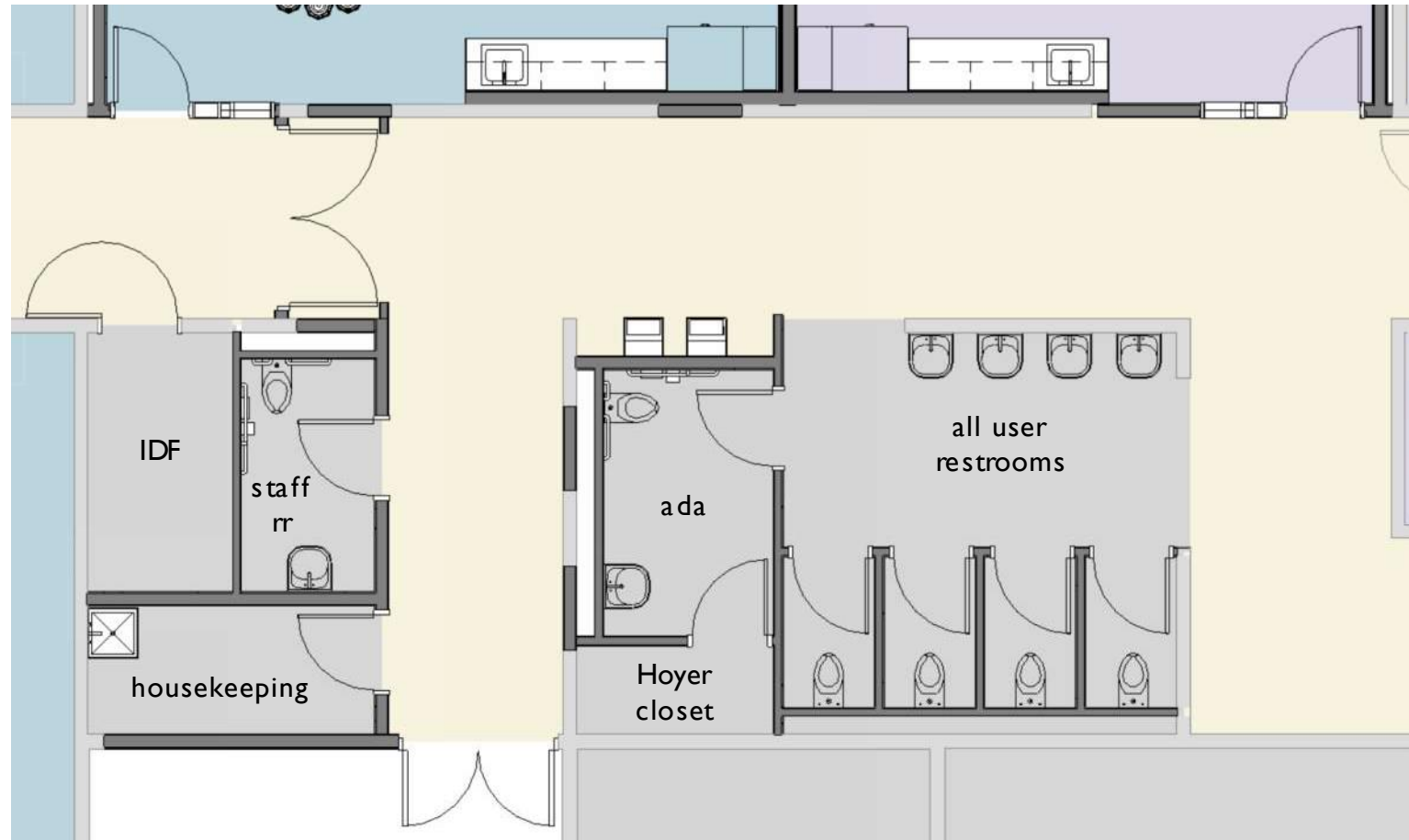
- 12** Connectedness is encouraged through creating spaces that are culturally inclusive, sensitive, warm, welcoming and provide opportunities for spontaneous interaction, conversation and collaboration, fostering student success for all.



NORTH

keyplan

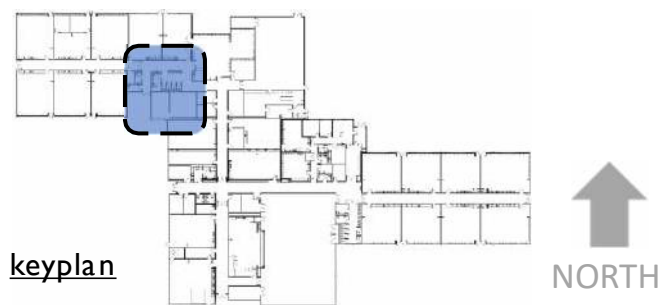
Restrooms



Garfield ES



Garfield ES



keyplan

NORTH



Design Phases Complete by October 2021

- ❖ Schematic Design – Done!
- ❖ Design Development – In Progress
- ❖ Construction Documents

Construction Begins Spring 2022

- ❖ Phased to allow students to attend school while construction is underway

Construction Completed Winter 2023



➤ Key Messages

Participating is a commitment by each committee member. You had to donate time and make arrangements in your personal life to be here.

THANK YOU!



DESIGN ADVISORY COMMITTEE: MEETING #3

May 19, 2021



Mountain View



Corvallis
SCHOOL DISTRICT

