



OREGON AT-A-GLANCE SCHOOL PROFILE

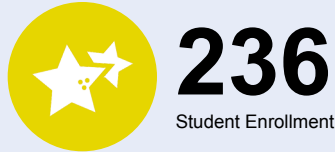
Mt View Elementary School



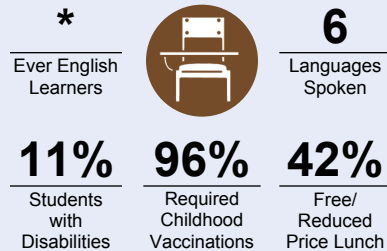
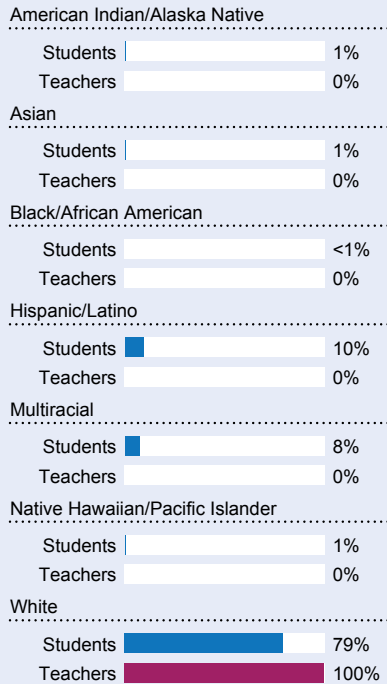
PRINCIPAL: Byron Bethards | GRADES: K-5 | 340 NE Granger Ave, Corvallis 97330 | 541-766-4760

School Environment

Students We Serve



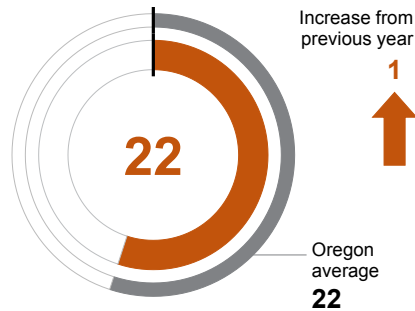
DEMOGRAPHICS



*<10 students or data unavailable

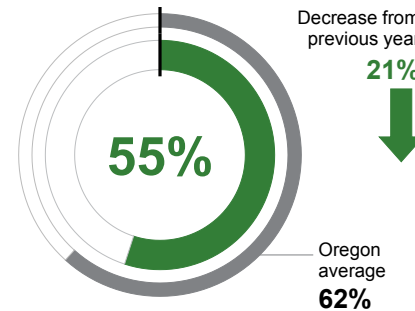
CLASS SIZE

Median class size.



REGULAR ATTENDERS

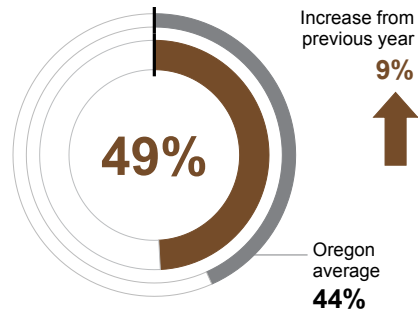
Students who attended more than 90% of their enrolled school days.



Academic Success

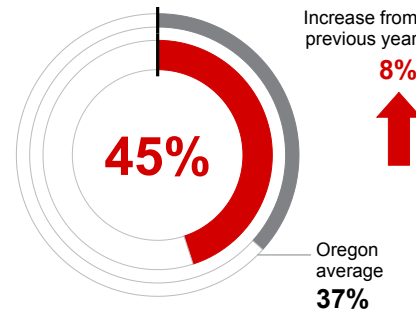
ENGLISH LANGUAGE ARTS

Students meeting state grade-level expectations.



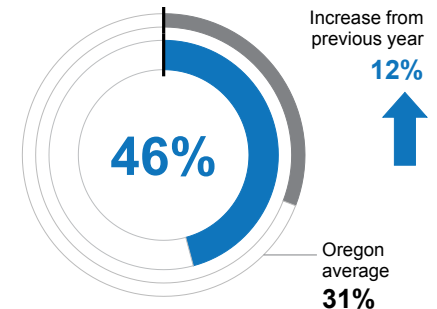
MATHEMATICS

Students meeting state grade-level expectations.



SCIENCE

Students meeting state grade-level expectations.



School Goals

Mt View Elementary School is a positive and caring school community that puts student growth first.

At Mt. View we believe all students can learn and succeed, and we base our instruction on a balanced and comprehensive curriculum. We center on strengthening relationships and building equitable systems as we work together to improve student learning.

State Goals

The Oregon Department of Education is partnering with school districts and local communities to ensure a 90% on-time, four year graduation rate by 2027. To progress toward this goal, the state will prioritize efforts to improve attendance, provide a well-rounded education, invest in implementing culturally responsive practices, and promote continuous improvement to close opportunity and achievement gaps for historically and currently underserved students.

Safe & Welcoming Environment

We encourage students to make positive behavior choices by implementing Positive Behavior Intervention and Support (PBIS). PBIS is a program designed to teach respect, responsibility, and safety at our school. Through instruction, comprehension and regular practice, all staff members will implement a consistent set of behavior expectations and rules. When some students respond in unexpected ways, we view it as an opportunity for re-teaching, not punishment.

Our staff includes one school counselor.



OREGON AT-A-GLANCE SCHOOL PROFILE CONTINUED

Mt View Elementary School

Outcomes

Our Staff (rounded FTE)



15
Teachers



8
Educational assistants



1
Counselors/
Psychologists/
Social Workers



90%
Average teacher retention rate over the past three years



88%
% of licensed teachers with more than 3 years of experience



Yes
Same principal in the last 3 years

	REGULAR ATTENDERS	ENGLISH LANGUAGE ARTS	MATHEMATICS
American Indian/Alaska Native	<10 students or data unavailable	<10 students or data unavailable	<10 students or data unavailable
Asian	<10 students or data unavailable	<10 students or data unavailable	<10 students or data unavailable
Black/African American	<10 students or data unavailable	<10 students or data unavailable	<10 students or data unavailable
Hispanic/Latino	56%	<10 students or data unavailable	<10 students or data unavailable
Multiracial	58%	<10 students or data unavailable	<10 students or data unavailable
Native Hawaiian/Pacific Islander	<10 students or data unavailable	<10 students or data unavailable	<10 students or data unavailable
White	55%	52%	46%
Free/Reduced Price Lunch	42%	30%	28%
Ever English Learner	<10 students or data unavailable	<10 students or data unavailable	<10 students or data unavailable
Students with Disabilities	56%	21%	17%
Migrant	<10 students or data unavailable	<10 students or data unavailable	<10 students or data unavailable
Homeless	<10 students or data unavailable	<10 students or data unavailable	<10 students or data unavailable
Students in Foster Care	<10 students or data unavailable	<10 students or data unavailable	<10 students or data unavailable
Military Connected	<10 students or data unavailable	<10 students or data unavailable	<10 students or data unavailable
Talented and Gifted	<10 students or data unavailable	<10 students or data unavailable	<10 students or data unavailable
Female	56%	56%	47%
Male	55%	43%	42%
Non-Binary	<10 students or data unavailable	<10 students or data unavailable	<10 students or data unavailable

About Our School

BULLYING, HARASSMENT, AND SAFETY POLICIES

Corvallis schools are committed to providing a safe and positive learning environment for all students. Our school's response to bullying or harassment is to put a stop to the behavior quickly and consistently, provide students with positive behavioral supports, and to send the message that bullying and harassment is not acceptable. Programs our school has implemented include:

- Collaborative Problem Solving
- Second Steps
- Child Protection Unit - taught by our counselor
- Standard Response Protocol (SRP) for emergency response

EXTRACURRICULAR ACTIVITIES

Corvallis schools offer multiple extracurricular opportunities during and after the school day. Opportunities include:

- Naturalist Learning
- Student Choir
- Student Leadership
- Outdoor School

PARENT ENGAGEMENT

Parents play a vital role in Corvallis schools. We welcome parent volunteers in our buildings and create multiple opportunities for parents to engage in our school communities. Examples of Parent Engagement opportunities at Mt View include:

- Classroom Volunteers
- Art or Library Volunteers
- Wetland Maintenance
- Garden Maintenance
- Monthly PTA Meetings
- PTA sponsored events like Jog-a-thon, School Dances, School Carnivals

COMMUNITY ENGAGEMENT

The Corvallis community provides multiple opportunities to partner with our schools and enrich the lives of our students. Community organizations who partner with our school include:

- Boys & Girls Club of Corvallis
- Benton County 4H
- Hewlett Packard
- Trillium Family Services
- Old Mill Center
- Oregon State University
- City of Corvallis